



tenías

Brochure

*of front loader and implements
for models*



MASSEY FERGUSON

**DRP System ®
AUTOMATIC LOADER HITCH**



It allows secure and simple loader coupling and uncoupling.

SAFETY VALVES

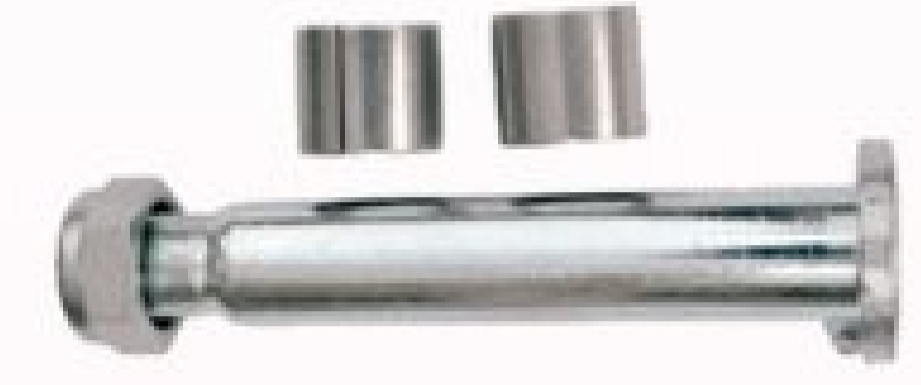


It regulates the pressure of hydraulics cylinders avoiding over pressures and unexpected breakages.

DETAIL INSIDE ARM

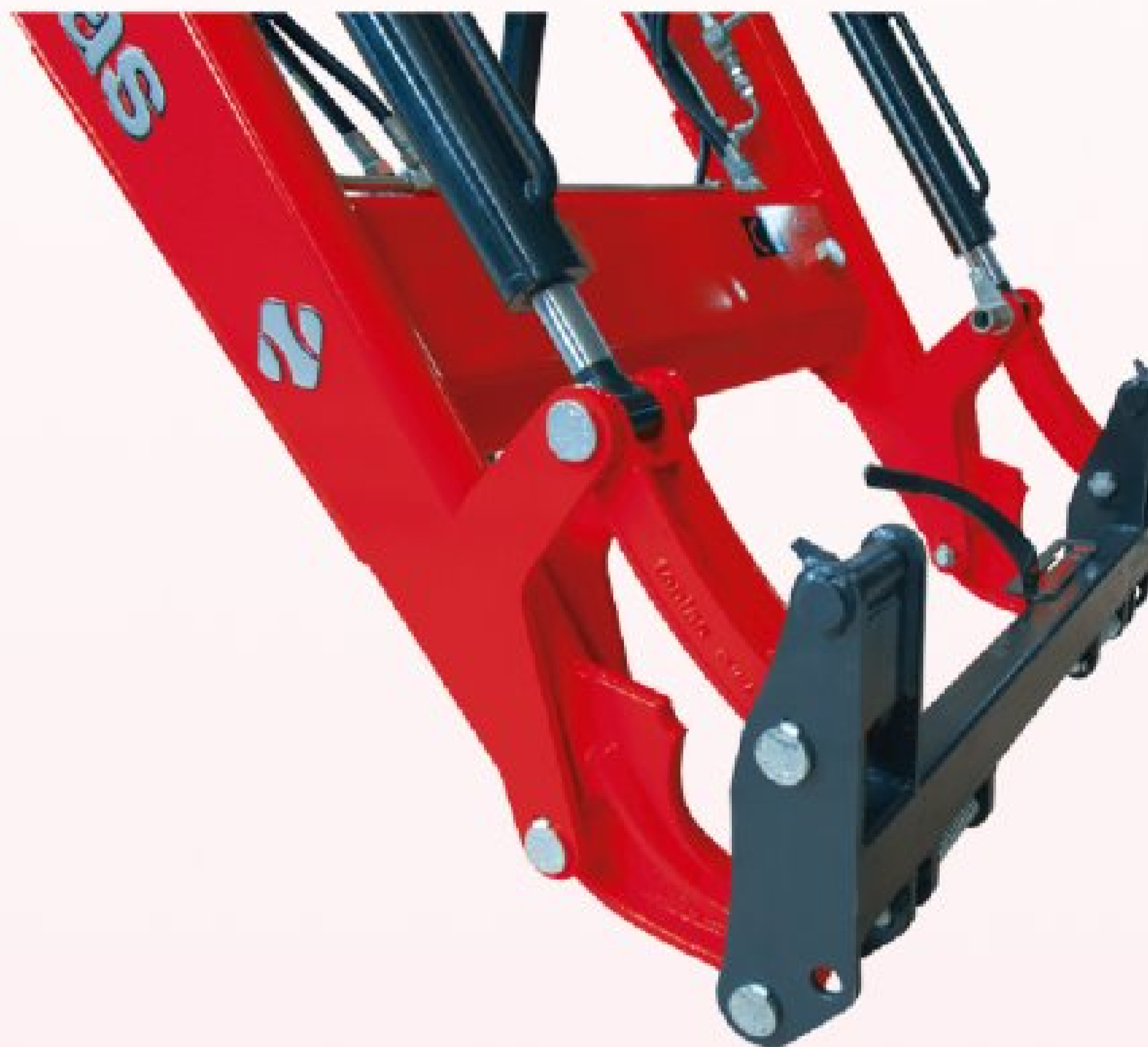


**AUTO LUBRICANT BUSHINGS
IN EACH JOINT**



Bushings in each joint, with greasers in the most problematic areas, ensure the sustainability of the whole.

**DRC System ®
AUTOMATIC HITCH FOR IMPLEMENTS**



Only few seconds are needed to hitch or unhitch implements

DR2B System ® / DR4B System ®



Fast hydraulic plugging with flat tips allowing more cleanliness and plugging with residual pressure.



OPTIONS

**AH System ®
SHOCK ABSORBER**



A good confort is obtained for the user as well as protection for all components during transport.

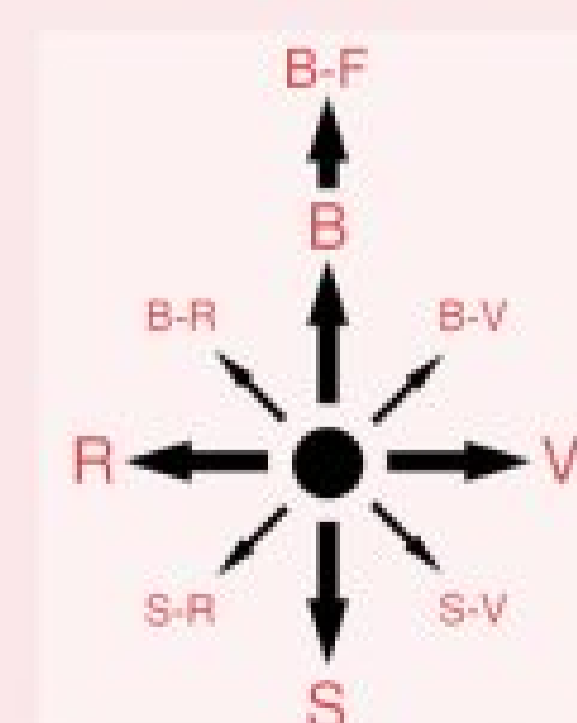
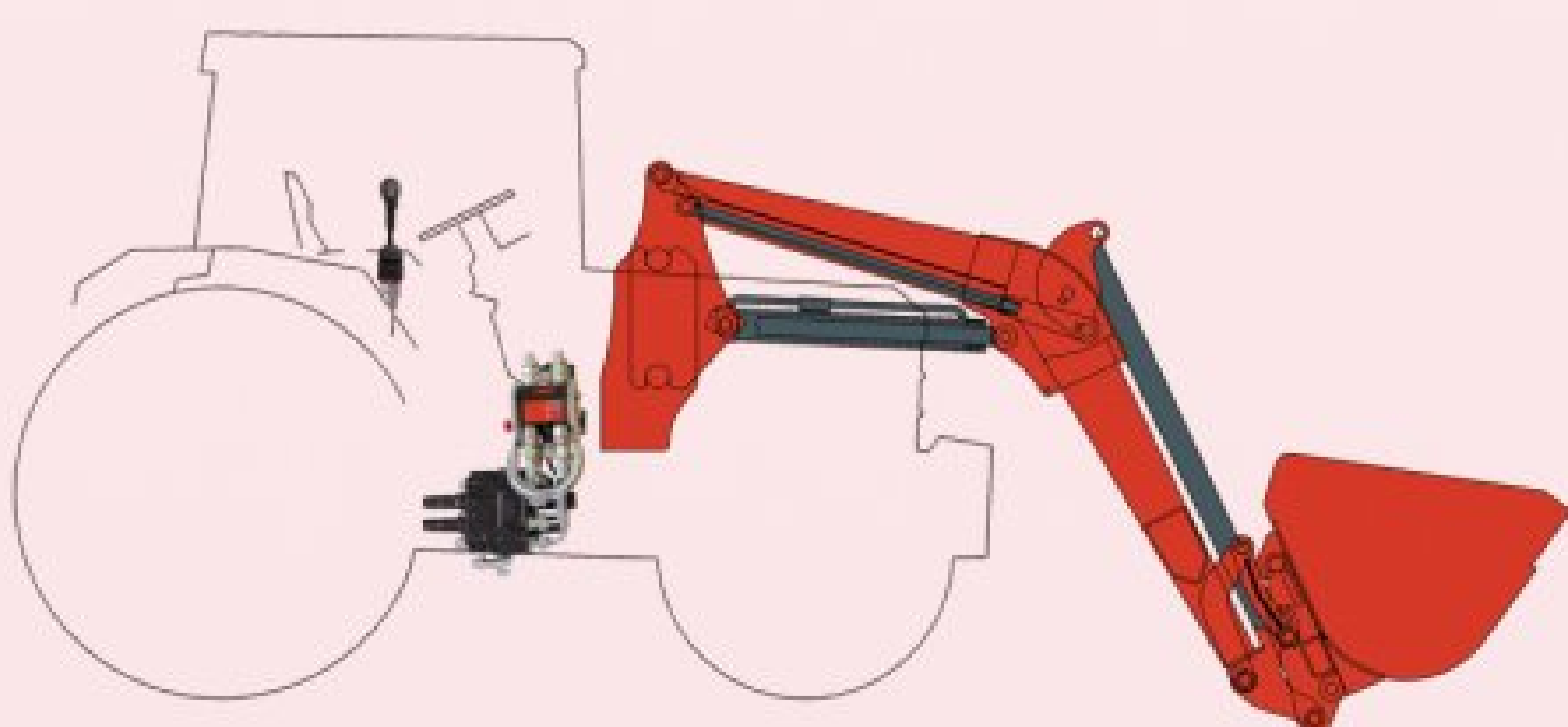


**SERVICE LINE FOR HYDRAULIC
IMPLEMENTS**



**MS System ®
JOYSTICK**

Operating plan for joystick



Operated from a joystick that allows two moves simultaneously.

**PAINT FINISH IN
DIFFERENT COLORS**



serie evolution



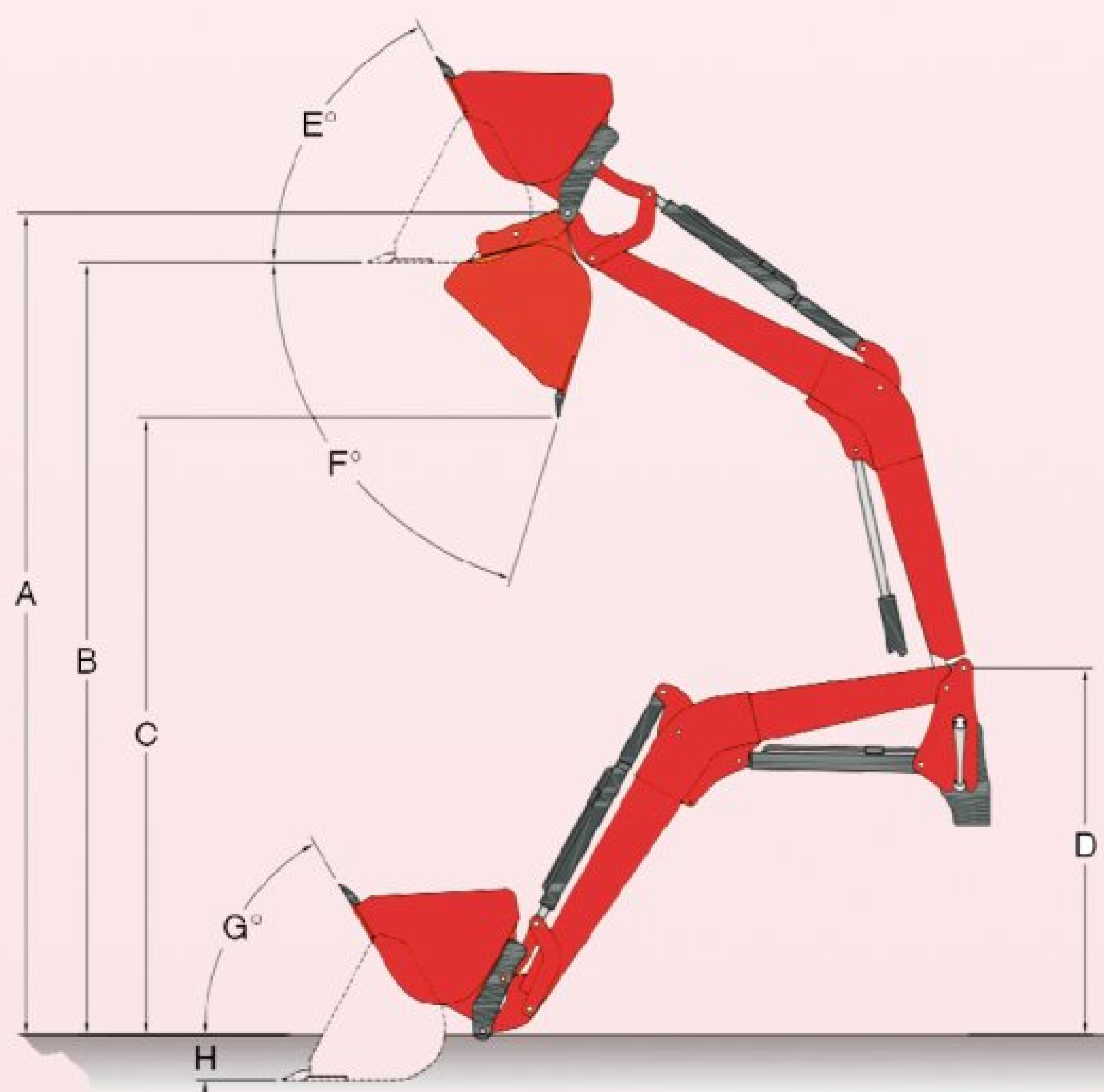
SUBFRAME DESIGNED FOR EACH TRACTOR MODEL

It's the loader main part and the basis of its proper functioning. It consists of a set of different pieces distributed from the front of the tractor to its back axle, obtaining an uniform repartition of the efforts.

model	te7	te8	te9	te10	te20	te30	te40
-------	-----	-----	-----	------	------	------	------

- CONTAIN**
- Adaptation
 - Arms
 - Hydraulic installation (Electrovalve, Distributor or tractor remote control)
 - All elements for work (Cylinders, Hoses, Connections, .. etc.)
 - DRB standard.

- DON'T CONTAIN**
- Buckets
 - Forks



NOTE: Mesures given can vary according to the tractor model.

Measurements were taken at 190 bar and with a weight placed on pallet fork.

I Start-up power
J Payload at 2,00 mts.
K At max. height

MOD. PALA	A	B	C	D	E	F	G	H	I	J	K
te6	-	-	-	-	-	-	-	-	914 Kgs	-	400 Kgs
te7	2540	2410	1832	1300	55°	78°	49°	149	1024 Kgs	-	724 Kgs
te8	2846	2690	2000	1420	64°	72°	54°	134	1960 Kgs	-	1250 Kgs
te9	3142	2909	2295	1469	64°	75°	57°	211	2044 Kgs	-	1362 Kgs
te10	3720	3484	2887	1706	64°	74°	57°	214	2728 Kgs	2068 Kgs	1628 Kgs
te20	4051	3815	3197	1792	64°	75°	59°	214	2160 Kgs	1824 Kgs	1530 Kgs
te30	4301	4065	3447	1970	62°	74°	57°	214	2858 Kgs	2133 Kgs	1755 Kgs
te40	4564	4327	3708	2140	62°	74°	57°	214	3177 Kgs	2550 Kgs	2215 Kgs

SILAGE SHEARS



WIDTH (mts)	TEETH	GRIP OPENING (mm)	WEIGHT (Kgs)
1,50	13	805	480
1,75	15	805	528

STONE BUCKET



WIDTH (mts)	CAPACITY (liters)	CAPACITY (liters)	WEIGHT
1,75	618	772	284
2,00	707	883	331

MANURE FORK



WIDTH (mts)	TEETH	TINE LENGTH (mm)	WEIGHT (Kgs)
1,50	8	850	163
1,75	9	850	189
2,00	11	850	210
2,20	11	850	258

SUGAR BEET BUCKET



WIDTH (mts)	CAPACITY (liters)	CAPACITY (liters)	WEIGHT
2,00	813	1016	251
2,40	988	1235	326

LOG GRIP



WIDTH (mm)	GRIP OPENING (mm)	CYLINDER INSIDE DIAMETER (mm)	WEIGHT (mm)
1170	930	80	276

HYDRAULIC MANURE FORK



WIDTH (mts)	TEETH	GRIP OPENING (mm)	WEIGHT (Kgs)
1,50	8	1265	297
1,75	9	1265	330
2,00	11	1265	360
2,20	11	1265	410

BUCKET 4 IN 1



WIDTH (mts)	CAPACITY (liters)	CAPACITY (liters)	WEIGHT
1,75	468	585	383
2,00	535	668	438

SILAGE BUCKET "TIBURON"



WIDTH (mts)	CAPACITY (liters)	CAPACITY (liters)	WEIGHT
2,00	1113	1391	520
2,20	1228	1535	542
2,40	1343	1678	570

ROUND BALES FORK



WIDTH (mm)	WIDTH TEETH (mm)	TEETH	WEIGHT (Kgs)
1172	800	2	101

SUGAR CANE GRIP



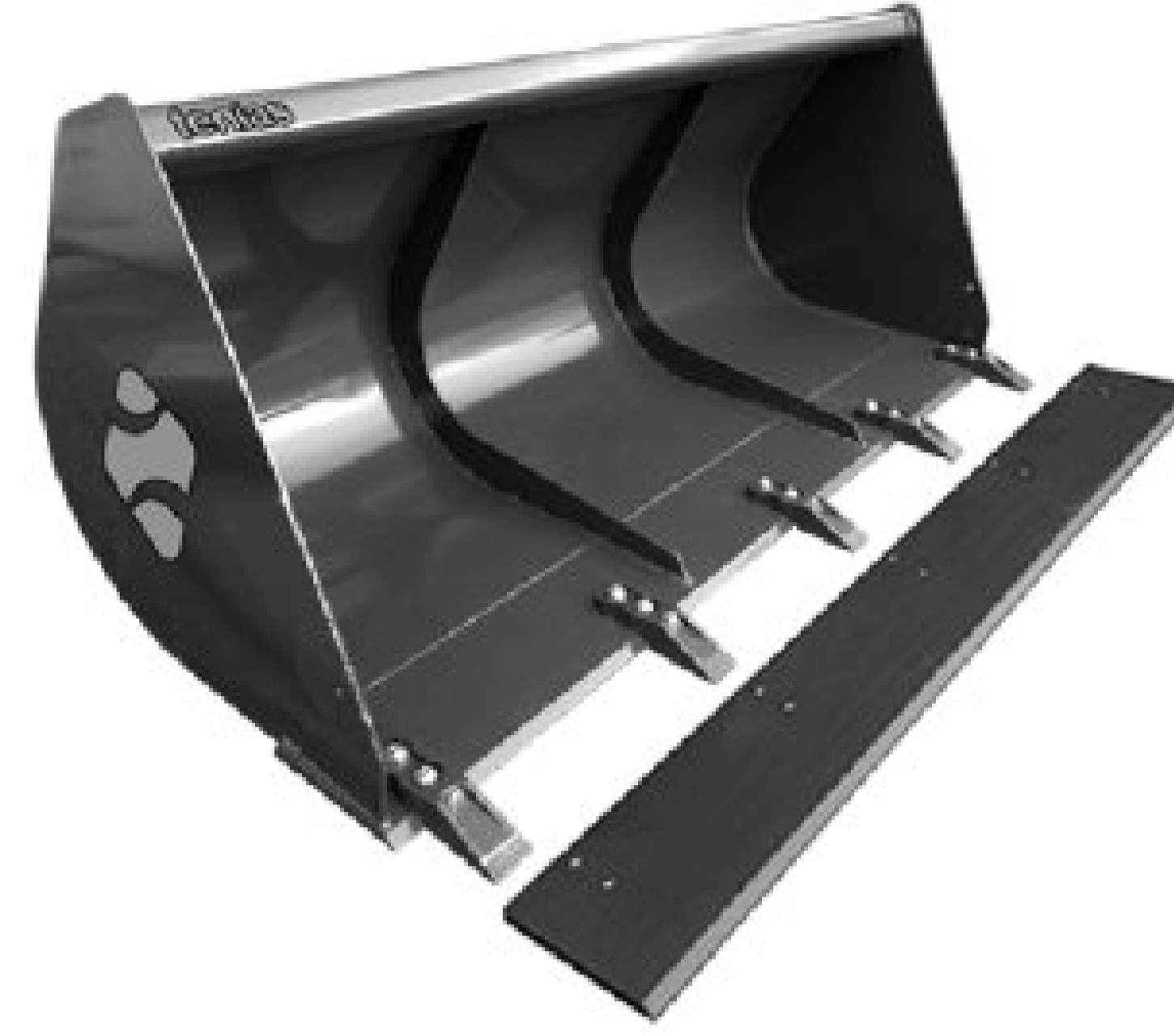
WIDTH (mm)	OUVERTURE PINCE (mm)	GRIP OPENING (mm)	WEIGHT (Kgs)
1195	970	1265	286

POTATO BUCKET



WIDTH (mts)	CAPACITY (liters)	CAPACITY (liters)	WEIGHT
2,20	1103	1378	363
2,40	1217	1521	396

STANDARD BUCKET



WIDTH (mts)	CAPACITY (liters)	CAPACITY (liters)	WEIGHT
1,25	353	441	169
1,50	423	528	199
1,75	494	617	218
2,00	564	705	260
2,20	621	776	269
2,40	677	846	295

PELICAN BUCKET



WIDTH (mts)	TEETH	GRIP OPENING (mm)	WEIGHT (Kgs)
1,50	8	1165	298
1,75	9	1165	320
2,00	11	1165	374
2,20	11	1165	445

GRAIN BUCKET



WIDTH (mts)	CAPACITY (litros)	CAPACITY (litros)	WEIGHT (Kgs)
1,80	812	1015	277
2,00	903	1128	298
2,20	993	1241	319
2,40	1083	1353	340

High-tip option

SILAGE BUCKET



WIDTH (mts)	CAPACITY (liters)	CAPACITY (liters)	WEIGHT
2,00	903	1128	484
2,40	1083	1353	566

SQUARE BALES FORK



WIDTH (mm)	HEIGHT (mm)	TEETH	WEIGHT (Kgs)
1775	1350	5	224

SLIDING SQUARE BALES FORK



WIDTH (mm)	HEIGHT (mm)	TEETH	WEIGHT (Kgs)
1775	1350	5	327

SIDE-SHIFT PALET FORK



ALLOWED WEIGHT (Kgs)	TINE LENGTH (mm)	MAX. TINE WIDTH DENT (mm)	WEIGHT (Kgs)
1500	1225	1060	290

Side Dump option

WRAPPED ROUND BALES GRIP (economic)



WIDTH (mts)	TEETH OPEN (mm)	TEETH CLOSED (mm)	WEIGHT (Kgs)
1,16	2080	70	150

STANDARD PALET FORK



ALLOWED WEIGHT (Kgs)	TINE LENGTH (mm)	MAX. TINE WIDTH DENT (mm)	WEIGHT (Kgs)
1500	1240	1065	173

WRAPPED ROUND BALES GRIP



WIDTH (mm)	TEETH OPEN (mm)	TEETH CLOSED (mm)	WEIGHT (Kgs)
1312	1305	2640	282

MODELO DE TRACTOR	serie	MODELO DE PALA						serie 300	OBS.
		te7	te8	te9	te10	te20	te30		
174 F	100			●				B0	15-34
184 F Antiguo	100			●				B0	
184 F	100			●				B0	
194 F	100			●				B0	
194 F Antiguo	100			●				B0	
268 (XTRA)	2000			●				B0	
275 ST (XTRA)	200			●				B0	
275 DT (XTRA)	200				●			B1	
283 SUPER DT	200				●			B1	
285	200					●		B2	
290 ST (XTRA)	200			●				B0	
290 DT (XTRA)	200				●			B1	
291 SUPER DT	200				●			B1	
360 TURBO (DT)	300		●					B00	
360 PLUS (ST)	300		●					B00	
365	300					●		B2	
374 F	300			●				B0	15-18-34
374 GE	300			●				B0	15-34
375	300					●		B2	
384 F	300			●				B0	15-34
384 GE	300			●				B0	15-34
390	300					●		B2	
394 A	300			●				B0	13-33-34
394 F	300			●				B0	15-34
394 S	300			●				B0	15-34
398	300					●		B2	
399 S y SE	300						●	B3	
420 DT	400			●				B0	19
440 ST	400				●			B1	19
440 DT	400					●		B2	19
690	600				●			B1	
690 Largo (FRANCIA)	600				●			*	
1260	1000	●						B000	19
1335	1000	●						B000	19
1345	1000	●						B000	19
1532	1000	●						B000	19
1533	1000	●						B000	19
1547	1000		●					B00	
2405	2000	●						B000	19
2415	2000	●						B000	19
3125	3000						●	B3	
3225 F Antiguo	3200			●				B0	15-18-34
3235	3000				●			B1	
3235 HC ST	3000				●			B1	
3235 HC	3200						●	B3	
3235 F Antiguo	3200			●				B0	15-18-34
3245	3000				●			B1	
3245 HC ST	3000				●			B1	
3245 HC	3200						●	B3	
3245 FA	3200			●				B0	15-18-33-34
3255 HC ST	3000				●			B1	
3255 HC	3200						●	B3	
3255 FA	3200			●				B0	15-18-33-34
3330 F	3300			●				B0	
3330 FE	3300			●				B0	10-18
3330 S	3300			●				B0	10-18
3340 F	3300			●				B0	10-18
3340 FE	3300			●				B0	10-18
3340 S	3300			●				B0	10-18
3350 F	3300			●				B0	10-18

MODELO DE TRACTOR	serie	MODELO DE PALA						serie 300	OBS.
		te7	te8	te9	te10	te20	te30		
3350 S	3300			●				B0	10-18
3355 S	3300			●				B0	10-18
3355 F	3300			●				B0	10-18
3435 F	3400			●				B0	10-18
3435 S	3400		●					B0	10-18
3445 F	3400			●				B0	10-18
3455 F	3400			●				B0	10-18
3610	3600						●	B4	
3620	3600						●	B4	
3625 STD	3600				●			B1	15 (2007)
3625 F/GE/S	3600			●				B0	
3630	3600						●	B4	
3630 XTRA	3600				●			B1	
3635 F/GE/S	3600			●				B0	
3635	3600				●			B1	15 (2007)
3640	3600						●	B4	
3640 F/GE/S	3600			●				B0	
3640 XTRA	3600				●			B1	
3645 DYNASHIFT	3600					●		B3	15
3645	3600				●			B1	15 (2007)
3645 F/GE/S	3600			●				B0	
3650	3600						●	B4	
3650 F/GE/S	3600			●				B0	
3650 XTRA	3600				●			B1	
3655 DYNASHIFT	3600					●		B3	15
3655	3600				●			B1	15 (2007)
3655 F/S	3600			●				B0	
3660 F/GE/S	3600			●				B0	
3660 XTRA	3600				●			B1	
3670	3600						●	B4	
3690	3600						●	B4	
4225	4200				●			B2	
4235	4200				●			B2	
4245	4200				●			B2	
4255	4200				●			B2	
4260	4200					●		B3	
4265	4000				●			B1-B2	
4270	4200					●		B3	
4283	4000				●			B1-B2	
4291 DT (C/C)	4000								
4292	4000				●			B2	
4297	4000				●			B2	
4299	4000				●			B2	
4325	4300				●			B2	
4335	4300				●			B2	
4345	4300				●			B2	
4355	4300				●			B2	
4360	4300					●		B3	
4365	4300				●			B2	
4370	4300					●		B3	
4445	4400				●			B1	
4455	4400				●			B1	
4708	4000			●				B1	
4709	4000			●				B1	
5410 Dyna 4	5400 T3				●			B1	
5420 Dyna 4	5400 T3				●			B1	
5425	5400 T2				●			B2	15-61
5430 Dyna 4	5400 T3				●			B1	
5435 T2 y T3	5400 T2 y T3				●			B2	15-23-61
5440 Dyna 4	5400 T3				●			B2	

MODELO DE TRACTOR	serie	MODELO DE PALA						serie 300	OBS.
		te7	te8	te9	te10	te20	te30		
5445 T2 y T3	5400 T2 y T3					●		B3	15-23-61
5450 Dyna 4	5400 T3					●		B2	
5455 T2 y T3	5400 T2 y T3					●		B3	15-23-61
5460	5400 T2					●		B3	15-23-61
5460 Dyna 4 Motor Sisu	5400 T3					●		B3	22
5465	5400 T2					●		B3	15-61
5465 Dyna 4	5400 T3					●		B3	15-18-22 23-26-61
5465 Dyna 4	5400 T3					●		B4	18-22
5470 Dyna 4	5400 T2					●		B3	15-61
5475 Dyna 4	5400 T3					●		B4	15-18-22 23-26-61
5475 Dyna 4	5400 T3					●		B3	18-22
5480 Dyna 4	5400 T2					●		B3	18-22
5608 Dyna 4	5600			●				B1	7
5609 Dyna 4	5600			●				B1	7
5610 Dyna 4	5600			●				B1	7
5611 Dyna 4 CON Y SIN SUSP.	5600			●				B1	6-16-18
5611 Dyna 4 ver observaciones	5600					●		B2	6-16-18
5612 Dyna 4 CON Y SIN SUSP.	5600			●				B1	6-16-18
5612 Dyna 4 ver observaciones	5600					●		B2	6-16-18
5613 Dyna 4 CON Y SIN SUSP.	5600			●				B1	6-16-18
5613 Dyna 4 ver observaciones	5600					●		B2	6-16-18
6110	6100					●		B2	
6120	6100					●		B2	
6130	6100					●		B2	
6140	6100					●		B2	
6150	6100					●		B2	
6160	6100					●		B3	
6170	6100					●		B3	
6180	6100					●		B3	
6190	6100					●		B3	
6245	6200					●		B3	
6255	6200					●		B3	
6260	6200					●		B3	
6265	6200					●		B3	
6270	6200					●		B3	
6280	6200						●	B3	
6290	6200						●	B3	
6455 Dyna 6	6400 T3					●		B3	15-18-23-61
6455 DYNASHIFT	6400 T2					●		B2	4-15-18 23-61
6460 Dyna 6	6400 T2					●		B3	
6460 DYNASHIFT	6400 T2					●		B3	15-18-61-22
6465 DYNASHIFT	6400 T2					●		B3	15-18-61-22
6465 Dyna 6	6400 T3					●		B4	22
6465 Dyna 6	6400 T3					●		B3	15-18-22 23-61
6465 Dyna 6	6400 T2					●		B3	15-18-22 23-61
6465 DYNASHIFT ST	6400 T2					●		B3	15-18-22 23-61
6470 Dyna 6	6400 T2					●		B3	16-18-22
6475 Dyna 6	6400 T2					●		B3	15-18-22 23-61
6475 Dyna 6	6400 T3					●		B3	15-16-18 22-23-61
6475 DYNASHIFT	6400 T2					●		B3	15-18-22 23-61
6480 DYNASHIFT	6400 T2					●		B3	15-18-22 23-61

MODELO DE TRACTOR	serie	MODELO DE PALA						serie 300	OBS.
		te7	te8	te9	te10	te20	te30		
6480 Dyna 6	6400 T3					●		B4	15-18-22 23-26-61
6480 Dyna 6	6400 T3					●		B3	18-22
6485 Dyna 6	6400 T3					●		B4	15-18-23-61
6485 DYNASHIFT	6400 T2					●		B4	18
6490 Dyna 6	6400 T3					●		B4	18
6490 DYNASHIFT	6400 T2					●		B4	15-18-61
6495 Dyna 6	6400 T3					●		B4	15-18
6495 DYNASHIFT	6400 T2					●		B4	15-18-61
6497 Dyna 6	6400 T3					●		B4	15-18
6499 Dyna 6	6400 T3					●		B4	15-18
6612 Dyna 4	6600					●		B3	7-18
6613 Dyna 4 y Dyna 6	6600					●		B3	7-18
6614 Dyna 6 y Dyna VT	6600					●		B3	7-18
6615 Dyna 4 y Dyna 6	6600					●		B3	7-18
6615 Dyna VT	6600					●		B3	7-18
6616 Dyna 6 y Dyna VT	6600					●		B3	7-18
7465	7400 T3					●		B3	7-18
7475	7400 T3					●		B3	7-18
7480	7400 T3					●		B3	
7480 Dyna 4 y Dyna 6	7400 T3					●		B3	18-22
7480 Dyna VT	7400 T2					●		B4	15-18-35
7485 Dyna VT T2 y T3	7400 T2 y T3					●		B4	15-18-35
7490 Dyna VT	7400 T3					●		B4	15-18
7495 Dyna VT T2 y T3	7400 T2 y T3					●		B4	15-18
7614 Dyna 4	7000					●		B4	18
7615 Dyna 4 y Dyna 6	7000					●		B4	18
7615 Dyna VT	7000					●		B4	18
7616 Dyna 6 y Dyna VT	7000					●		B4	18
7618 Dyna 6 y Dyna VT	7000					●		B4	18
7619 Dyna 6	7000					●		B4	18
7714 Dyna 4	7700					●			
7715 Dyna 4 y Dyna 6	7700					●			
7715 Dyna VT	7700					●			
7716 Dyna 6 y Dyna VT	7700					●			
7718 Dyna 6 y Dyna VT	7700					●			
7719 Dyna 6 y Dyna VT	7700					●			16-18
7720 Dyna 6 Y Dyna VT	7700					●			18
7722 Dyna 6 y Dyna VT	7700					●			18
7724 Dyna 6 y Dyna VT	7700					●			18
7726 Dyna 6 y Dyna VT	7700					●			18
8110	8100					●		B4	18
8120	8100					●		B4	18
8130	8100					●		B4	18
8150	8100					●		B4	18
8210	8200					●		B4	18
8220 Power Control	8200					●		B4	18
8240	8200					●		B4	18
8240 Power Control	8200					●		B4	18
8250	8200					●		B4	18
8250 Power Control	8200					●		B4	18
8250 XTRA	8200					●		B4	18

OBSERVATIONS

- 4 - Specify wheel measures.
- 6 - Specify if the tractor has front suspension.
- 7 - With original three-point, fit an upper arm.
- 10 - Specify if the tractor has a cab or anti-dump chassis.
- 13 - Specify if the tractor has an auxiliary tank.
- 15 - Specify manufacture year.
- 16 - Specify if the tractor has a front hitch of origin.
- 18 - Shock absorber is recommended.

- 19 - Shock adsorber is compulsory.
- 22 - Specify motor type.
- 23 - The specified loader model can be adapted without counterweights.
- 26 - A higher loader model can be adapted if the tractor has a front hitch.
- 33 - Rubber tube supply to move oil filter.
- 34 - Hose with plugs supply to divert oil emptying.
- 35 - Upper special crossbar.
- 61 - Specify if the tractor has Open circuit or Closed circuit.



EXPORT AMERICA / ASIA / OCEANIA

Contact: Sergio Alonso
Tels: +34 983 33 80 99
Fax: +34 983 37 71 60
Movil: +34 690 13 30 10
e-mail: salonso@tenias.com

EXPORT EUROPE / RUSSIA

Contact: Victor Dominguez
Tels: +34 954 51 15 44 / +34 954 51 16 45
Fax: +34 954 99 90 88
Movil: +34 670 63 92 59
e-mail: vdominguez@tenias.com

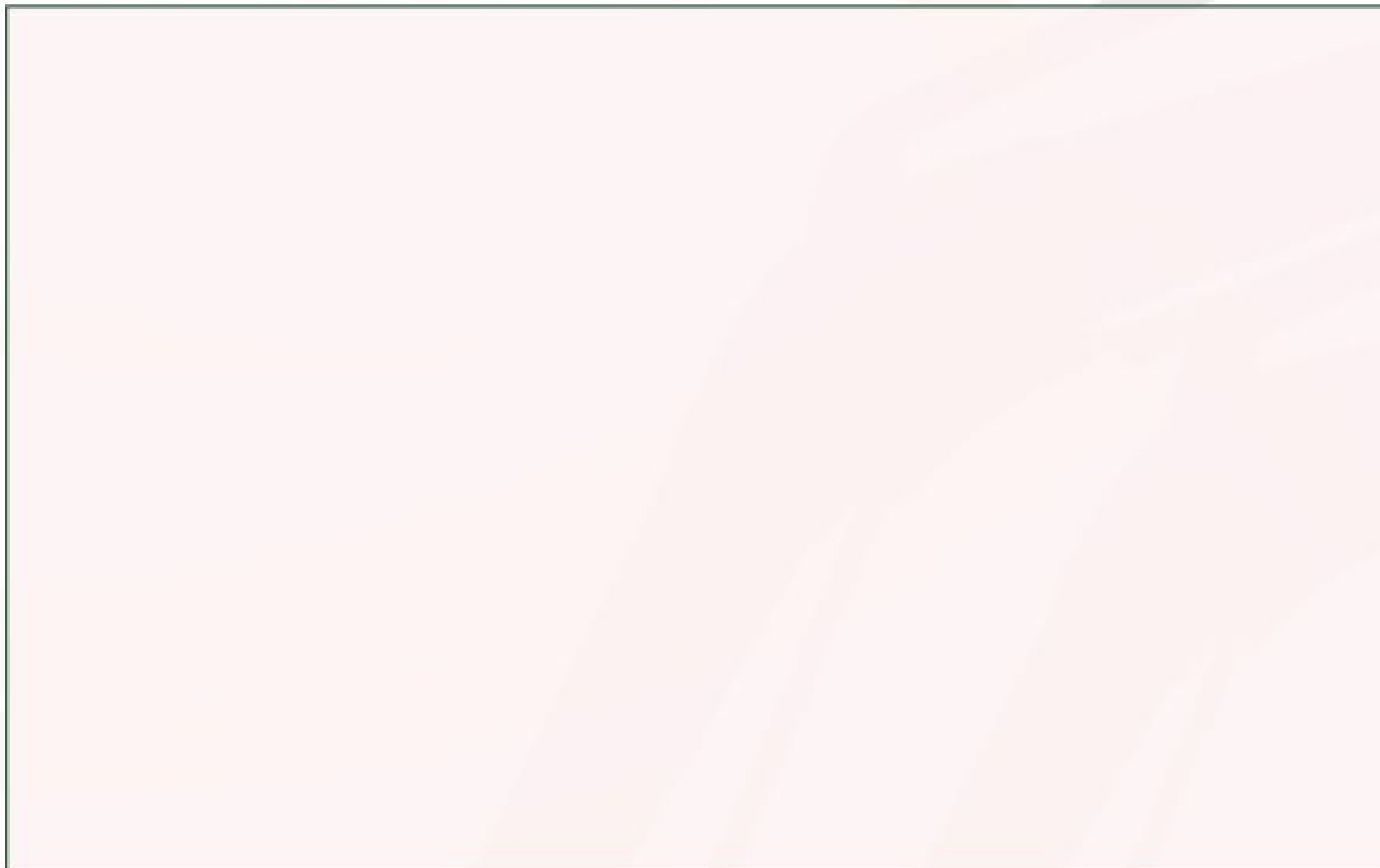
EXPORT AFRICA / ORIENTE MEDIO

Contact: Fernando Burgos
Tel. +34 983 33 80 99
Fax: +34 983 37 71 60
Movil: +34 636 97 57 65
e-mail: fburgos@tenias.com

HEAD OFFICE AND FACTORY

Pol. Ind. Valdeferrín, c/3 - Pcla. 91
50600 EJEA DE LOS CABALLEROS (Zaragoza-España)
Tel. +34 976 67 71 50
Fax +34 976 66 12 15
e-mail: tenias@tenias.com - www.tenias.com

Authorized dealer



tenías

FÁBRICA Y OFICINAS CENTRALES

Pol. Ind. Valdeferrín, c/3 - Pcla. 91
50600 EJEA DE LOS CABALLEROS (Zaragoza-España)
Tel. +34 976 67 71 50
Fax +34 976 66 12 15
e-mail: tenias@tenias.com - www.tenias.com