



tenias

Brochure

*of front loader and implements
for models*



JOHN DEERE

**DRP System ®
AUTOMATIC LOADER HITCH**



It allows secure and simple loader coupling and uncoupling.

SAFETY VALVES

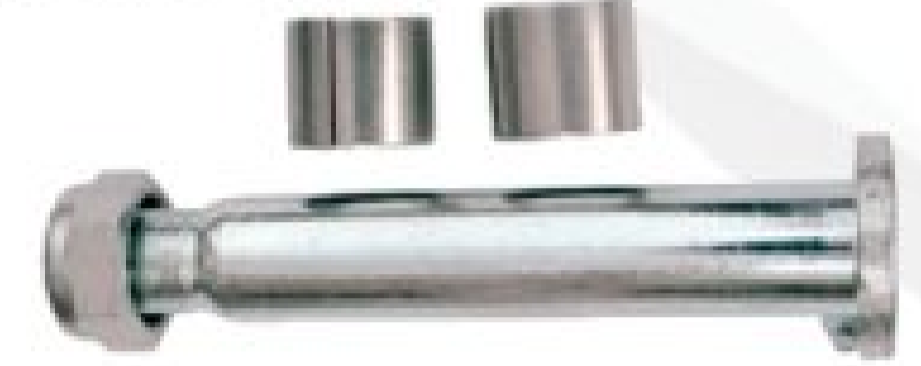


It regulates the pressure of hydraulics cylinders avoiding over pressures and unexpected breakages.

DETAIL INSIDE ARM



**AUTO LUBRICANT BUSHINGS
IN EACH JOINT**



Bushings in each joint, with greasers in the most problematic areas, ensure the sustainability of the whole.

DR2B System ® / DR4B System ®

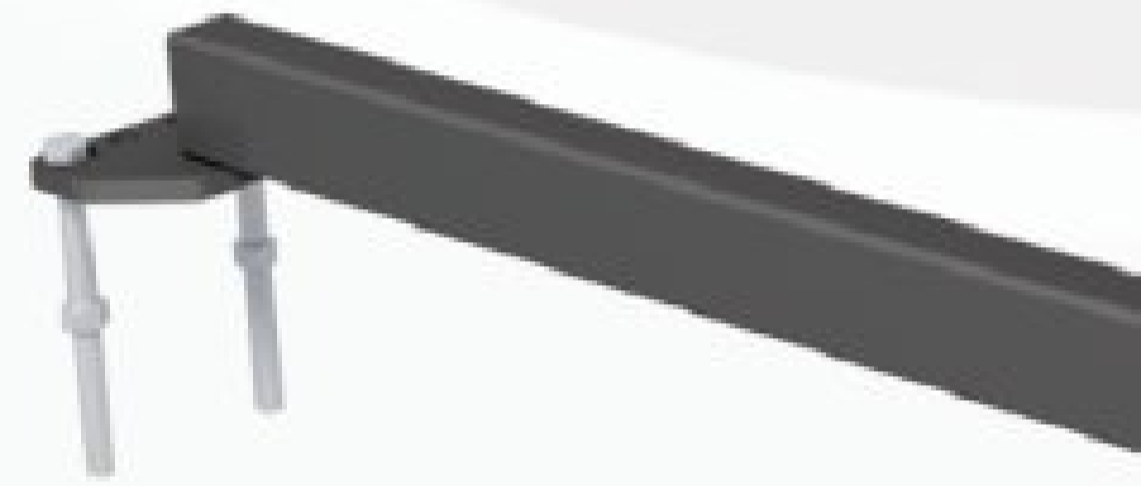


Fast hydraulic plugging with flat tips allowing more cleanliness and plugging with residual pressure.

**DRC System ®
AUTOMATIC HITCH FOR IMPLEMENTS**



Only few seconds are needed to hitch or unhitch implements



OPTIONS

**AH System ®
SHOCK ABSORBER**



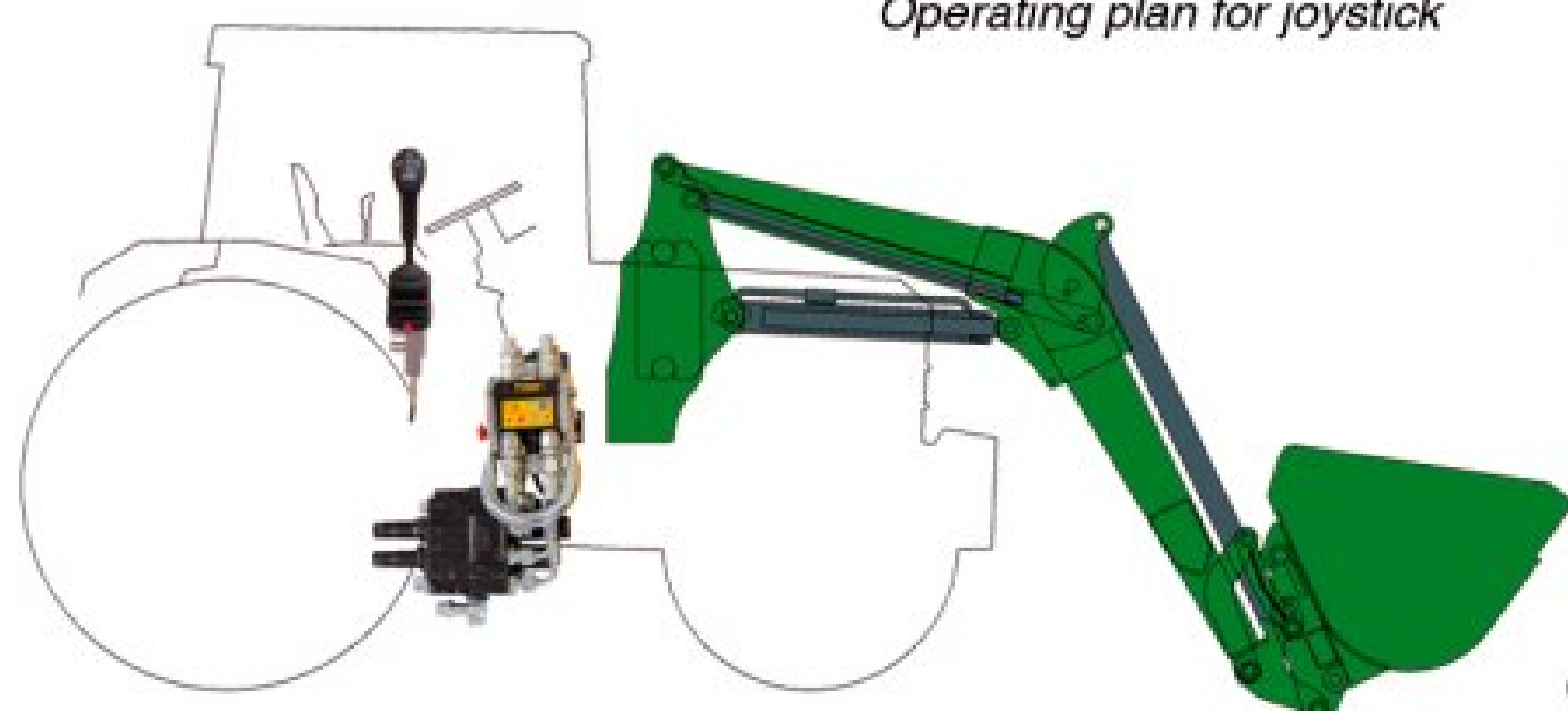
A good confort is obtained for the user as well as protection for all components during transport.



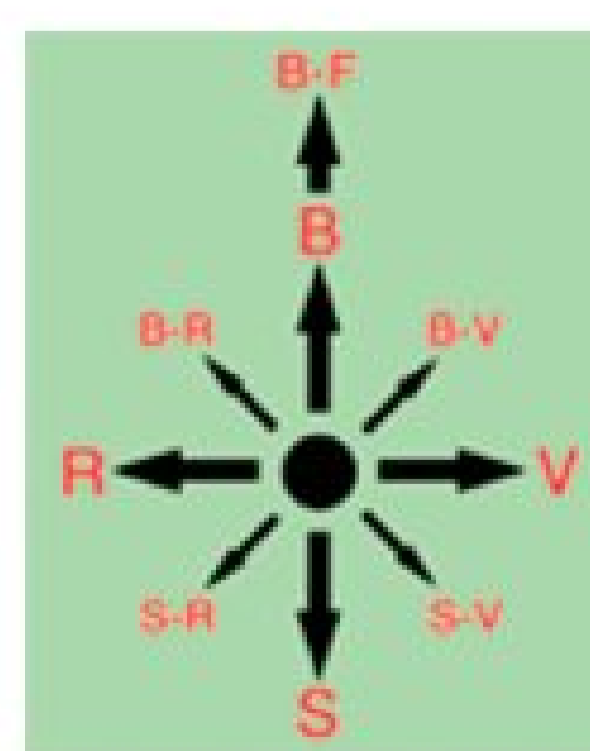
**SERVICE LINE FOR HYDRAULIC
IMPLEMENTS**



**MS System ®
JOYSTICK**



Operating plan for joystick



Operated from a joystick that allows two moves simultaneously.

**PAINT FINISH IN
DIFFERENT COLORS**



serie evolution



SUBFRAME DESIGNED FOR EACH TRACTOR MODEL

It's the loader main part and the basis of its proper functioning. It consists of a set of different pieces distributed from the front of the tractor to its back axle, obtaining an uniform repartition of the efforts.

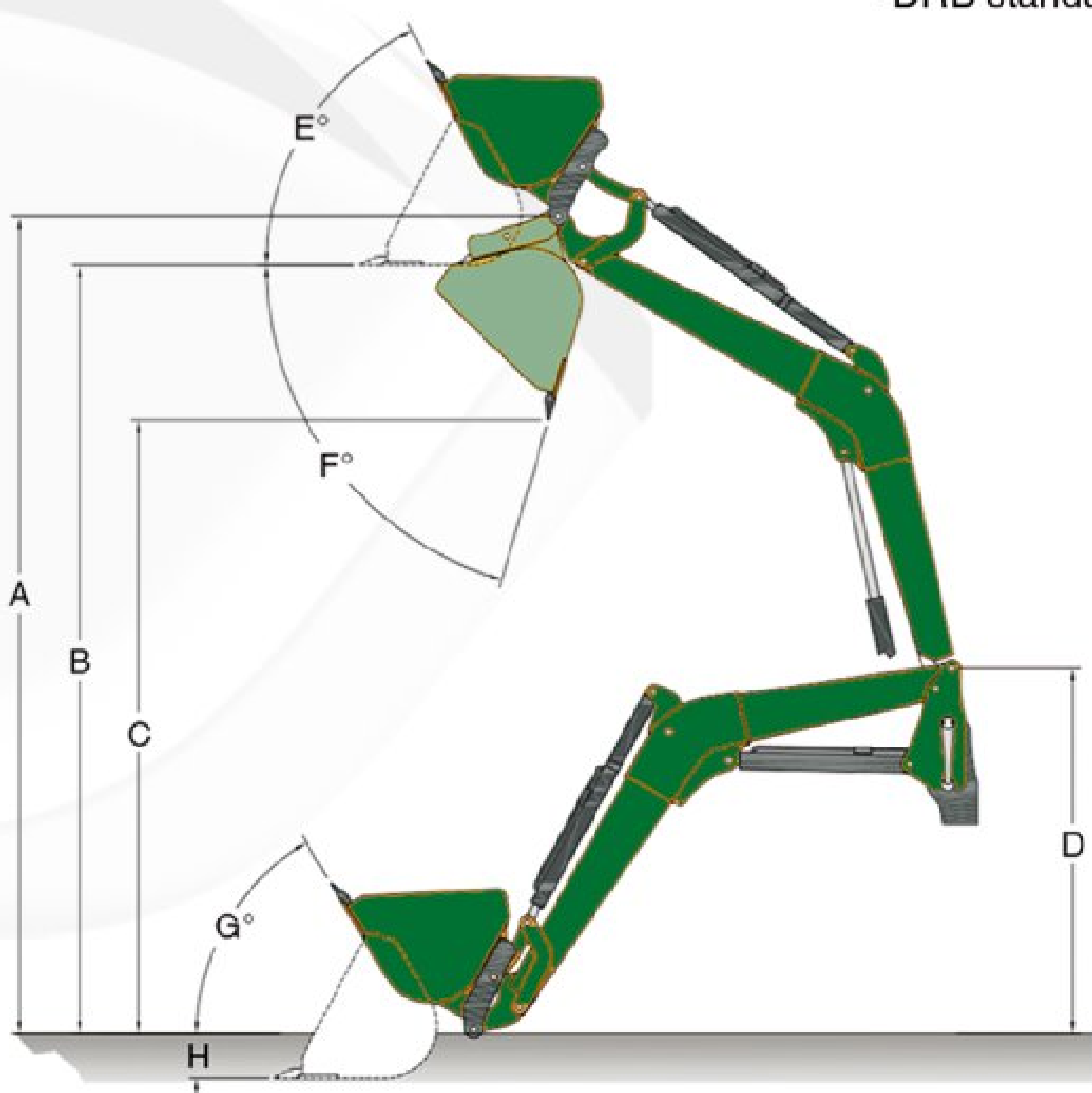
model	te7	te8	te9	te10	te20	te30	te40
-------	-----	-----	-----	------	------	------	------

CONTAIN

- Adaptation
- Arms
- Hydraulic installation (Electrovalve, Distributor or tractor remote control)
- All elements for work (Cylinders, Hoses, Connections, .. etc.)
- DRB standard.

DON'T CONTAIN

- Buckets
- Forks



NOTE: Mesures given can vary according to the tractor model.

Measurements were taken al 190 bar and with a weight placed on pallet fork.

- I Start-up power
- J Payload at 2,00 mts.
- K At max. height

MOD. PALA	A	B	C	D	E	F	G	H	I	J	K
te6	-	-	-	-	-	-	-	-	914 Kgs	-	400 Kgs
te7	2540	2410	1832	1300	55°	78°	49°	149	1024 Kgs	-	724 Kgs
te8	2846	2690	2000	1420	64°	72°	54°	134	1960 Kgs	-	1250 Kgs
te9	3142	2909	2295	1469	64°	75°	57°	211	2044 Kgs	-	1362 Kgs
te10	3720	3484	2887	1706	64°	74°	57°	214	2728 Kgs	2068 Kgs	1628 Kgs
te20	4051	3815	3197	1792	64°	75°	59°	214	2160 Kgs	1824 Kgs	1530 Kgs
te30	4301	4065	3447	1970	62°	74°	57°	214	2858 Kgs	2133 Kgs	1755 Kgs
te40	4564	4327	3708	2140	62°	74°	57°	214	3177 Kgs	2550 Kgs	2215 Kgs

SILAGE SHEARS



WIDTH (mts)	TEETH	GRIP OPENING (mm)	WEIGHT (Kgs)
1,50	13	805	480
1,75	15	805	528

STONE BUCKET



WIDTH (mts)	CAPACITY (liters)	CAPACITY (liters)	WEIGHT
1,75	618	772	284
2,00	707	883	331

MANURE FORK



WIDTH (mts)	TEETH	TINE LENGTH (mm)	WEIGHT (Kgs)
1,50	8	850	163
1,75	9	850	189
2,00	11	850	210
2,20	11	850	258

SUGAR BEET BUCKET



WIDTH (mts)	CAPACITY (liters)	CAPACITY (liters)	WEIGHT
2,00	813	1016	251
2,40	988	1235	326

LOG GRIP



WIDTH (mm)	GRIP OPENING (mm)	CYLINDER INSIDE DIAMETER (mm)	WEIGHT (mm)
1170	930	80	276

HYDRAULIC MANURE FORK



WIDTH (mts)	TEETH	GRIP OPENING (mm)	WEIGHT (Kgs)
1,50	8	1265	297
1,75	9	1265	330
2,00	11	1265	360
2,20	11	1265	410

BUCKET 4 IN 1



WIDTH (mts)	CAPACITY (liters)	CAPACITY (liters)	WEIGHT
1,75	468	585	383
2,00	535	668	438

SILAGE BUCKET "TIBURON"



WIDTH (mts)	CAPACITY (liters)	CAPACITY (liters)	WEIGHT
2,00	1113	1391	520
2,20	1228	1535	542
2,40	1343	1678	570

ROUND BALES FORK



WIDTH (mm)	WIDTH TEETH (mm)	TEETH	WEIGHT (Kgs)
1172	800	2	101

SUGAR CANE GRIP



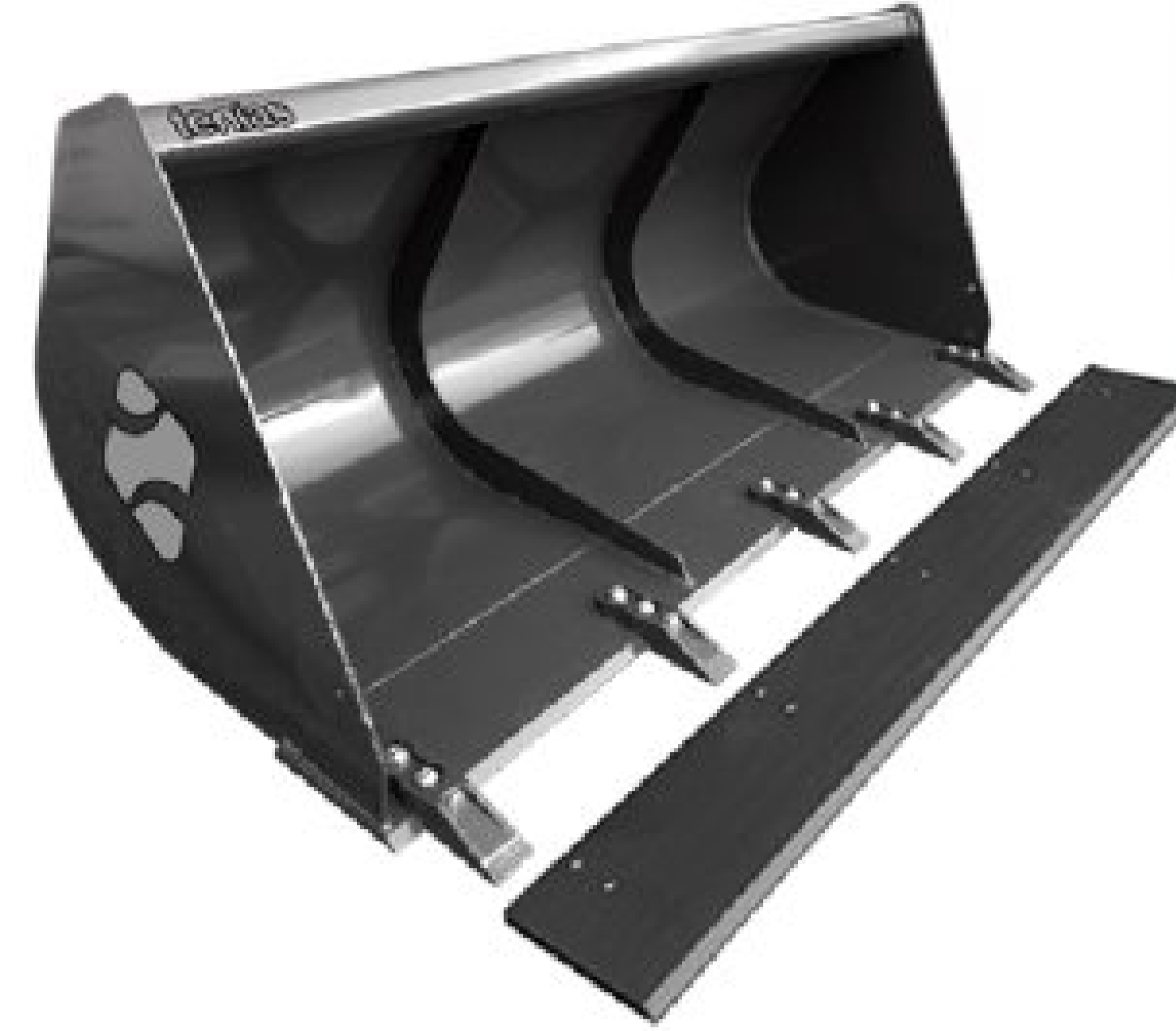
WIDTH (mm)	OUVERTURE PINCE (mm)	GRIP OPENING (mm)	WEIGHT (Kgs)
1195	970	1265	286

POTATO BUCKET



WIDTH (mts)	CAPACITY (liters)	CAPACITY (liters)	WEIGHT
2,20	1103	1378	363
2,40	1217	1521	396

STANDARD BUCKET



WIDTH (mts)	CAPACITY (liters)	CAPACITY (liters)	WEIGHT
1,25	353	441	169
1,50	423	528	199
1,75	494	617	218
2,00	564	705	260
2,20	621	776	269
2,40	677	846	295

PELICAN BUCKET



WIDTH (mts)	TEETH	GRIP OPENING (mm)	WEIGHT (Kgs)
1,50	8	1165	298
1,75	9	1165	320
2,00	11	1165	374
2,20	11	1165	445

GRAIN BUCKET



WIDTH (mts)	CAPACITY (litros)	CAPACITY (litros)	WEIGHT (Kgs)
1,80	812	1015	277
2,00	903	1128	298
2,20	993	1241	319
2,40	1083	1353	340

High-tip option

SILAGE BUCKET



WIDTH (mts)	CAPACITY (liters)	CAPACITY (liters)	WEIGHT
2,00	903	1128	484
2,40	1083	1353	566

SQUARE BALES FORK



WIDTH (mm)	HEIGHT (mm)	TEETH	WEIGHT (Kgs)
1775	1350	5	224

SLIDING SQUARE BALES FORK



WIDTH (mm)	HEIGHT (mm)	TEETH	WEIGHT (Kgs)
1775	1350	5	327

SIDE-SHIFT PALET FORK



ALLOWED WEIGHT (Kgs)	TINE LENGTH (mm)	MAX. TINE WIDTH DENT (mm)	WEIGHT (Kgs)
1500	1225	1060	290

Side Dump option

WRAPPED ROUND BALES GRIP (economic)



WIDTH (mts)	TEETH OPEN (mm)	TEETH CLOSED (mm)	WEIGHT (Kgs)
1,16	2080	70	150

STANDARD PALET FORK



ALLOWED WEIGHT (Kgs)	TINE LENGTH (mm)	MAX. TINE WIDTH DENT (mm)	WEIGHT (Kgs)
1500	1240	1065	173

WRAPPED ROUND BALES GRIP



WIDTH (mm)	TEETH OPEN (mm)	TEETH CLOSED (mm)	WEIGHT (Kgs)
1312	1305	2640	282

MODELO DE TRACTOR	serie	MODELO DE PALA						serie 300	OBS.
		te7	te8	te9	te10	te20	te30		
1035 EF	35			●				B0	
1040	40			●				B0	
1040 F	40			●				B0	
1040 V	40		●					B00	
1140	40			●				B0	
1140 F	40			●				B0	
1630	30			●				B0	
1635	35			●				B0	
1635 EF	35			●				B0	
1640	40				●			B1(ST) B2(DT)	
1840	40				●			B1(ST) B2(DT)	
1845 F	45			●				B0	
1850	50			●				B0	
1850 F	50			●				B0	
1850 V	50		●					B00	
1950 F	50				●			B1	
1950	50				●			B1	
2020	20				●			B2	
2030	30				●			B2	
2035	35				●			B2	
2040 F	40				●			B1	
2040	40				●			B1(ST) B2(DT)	
2050 F	40				●			B1	
2100	2000				●			B1	
2120	20				●			B2	
2130	30				●			B2	
2135	35				●			B2	
2140	40				●			B1(ST) B2(DT)	
2200	2000				●			B1	
2250	50				●			B1(ST) B2(DT)	
2300	2000				●			B1	
2345 F	45			●				B0	
2400	2000				●			B1	
2450	50				●			B1(ST) B2(DT)	
2450 F	50				●			B1	
2650	50				●			B1(ST) B2(DT)	
2650 F	50				●			B1	
2700	2000					●		B2	31
2800	2000					●		B2	31
2850	50				●			B1(ST) B2(DT)	
3050	50					●		B3	
3120	20					●		B2	
3130	30					●		B2	
3135	35					●		B2	
3140	40					●		B2	
3150	50					●		B3	
3200	3000					●		B2	
3300 X	3000					●		B2	
3340	40					●		B2	
3350	50					●		B3	
3400 X	3000					●		B2	
3440	40						●	B3	
3640	40						●	B3	
3650	50						●	B3	
4040	40						●	B3	
4050	50							●	B4
4055	55							●	B4
4066 R	4R		●					B-0	
4240 S	40						ST DT	B3(ST) B4(DT)	
4255	55							●	B4
4350	50						ST DT	B3(ST) B4(DT)	

MODELO DE TRACTOR	serie	MODELO DE PALA						serie 300	OBS.	
		te7	te8	te9	te10	te20	te30			te40
4430	30							●	B4	
4440	40							●	B3	
4450	50						ST DT	●	B3(ST) B4(DT)	
4455	55							●	B4	
4640	40							●	B4	
5055 E	5E			●					B1	
5055 E (nuevo 2014)	5E			●					B1	
5065 E (nuevo 2014)	5E			●					B1	
5065 E	5E			●					B1	
5070 M	5M					●			B1	4-21
5075 E (nuevo 2014)	5E			●					B1	
5075 E	5E			●					B1	
5076 E	5E			●					B1	
5076 EF	5EF			●					-	
5080 M	5M					●			B1	4-21
5080 R	5R					●			B1	4-21
5080 G	5G			●					B0	4-21
5080 GF (motor JD)	5GF			●					B0	4-21
5080 RN	5RN					●			B1	
5082 E	5E			●					B1	
5083 E	5E					●			B1	
5085 M Americano	5M					●			B1	
5085 M Europeo	5M 00S					●			B1	
5090 E	5E					●			B1	
5090 G	5G			●					B0	
5090 G (motor FPT)	5G			●					B0	
5090 GF (motor JD)	5GF			●					B0	4-21
5090 M	5M					●			B1	4-21
5090 R	5R					●			B1	4-21
5090 RN	5RN					●			B1	4-21
5093 E	5E					●			B1	
5095 M Europeo	5M 00S					●			B1	
5100 GF (motor JD)	5GF			●					B0	4-21
5100 GF (motor FPT)	5GF			●	●				B0-B1	4-21
5100 GN	5GN			●	●				B0-B1	
5100 M	5M					●			B1	4-24
5100 R	5R					●			B1	4-21
5100 RN	5E					●			B1	
5100 M Americano	5M					●			B1	4-21
5105 M Europeo	5M 00S					●			B1	
5115 M Americano	5M					●			B1	
5215 F	5015		●						B00	
5300 STD / N	5000			●					B0	
5303 ST - DT	5000			●					B0	
5310 STD	5010			●					B0	
5315 F	5015		●						B00	
5315 V	5015		●						B00	
5315	5015			●					-	
5403 ST - DT	5000			●					B0	
5400 STD / N	5000			●					B0	
5410 STD	5010			●					B0	
5415	5015			●					B0	
5415 N (ST)	5000			●					B0-B1	
5425 N	5000			●					B0-B1	
5425	5000					●			B1	
5500 STD / N	5000			●					B1	
5510 STD / N	5010			●					B1	
5510 HIGHCROP	5010					●			B1	
5515	5015			●					B0	
5515 F	5015			●					B0	10
5605	5000			●					B0	

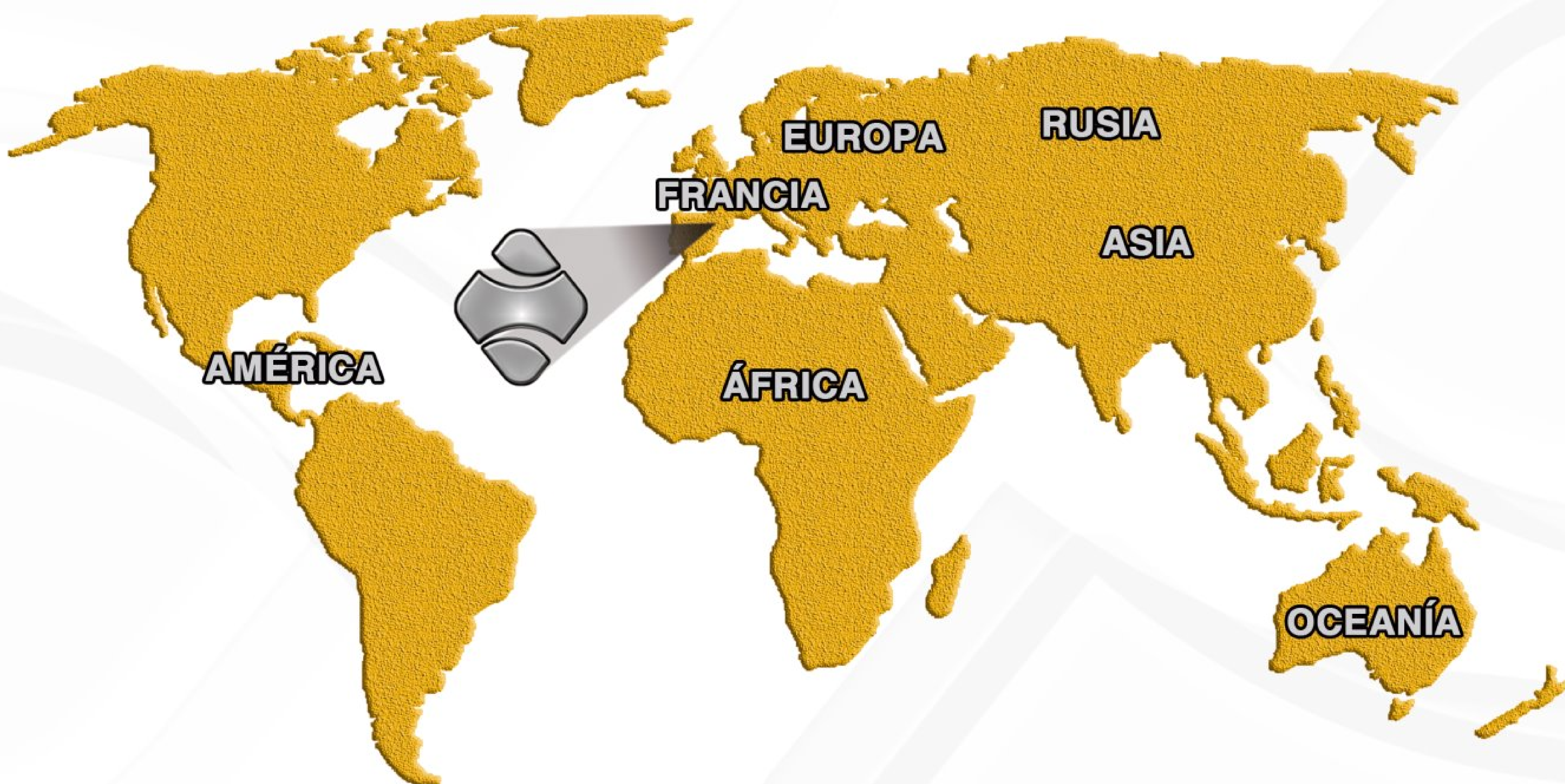
MODELO DE TRACTOR	serie	MODELO DE PALA							serie 300	OBS.
		te7	te8	te9	te10	te20	te30	te40		
5615 F	5015			●					B0	10
5620	5020				●				B1	62
5625	5000				●				B1	
5705	5000			●					B0	
5720	5020				●				B1	62
5725	5000				●				B1	
5820	5020				●				B1	62
6010	6010				●				B2	11_62
6090 MC	6MC						●		B2	7_16
6090 RC	6RC						●		B3	7
6100	6000				●				B2	11_62
6100 MC	6MC						●		B3	7_16
6100 D	6D					●			B2	
6100 RC	6RC						●		B3	7_16
6105 M	6M						●		B3	7_16
6105 R	6R						●		B3	7_16
6110 MC	6MC						●		B3	7_16
6110 RC	6RC						●		B3	7_16
6110	6010				●				B2	11_62
6110 D	6D				●				B2	
6115 D	6D				●				B2	
6115 R	6R						●		B3	7_16
6115 M	6M						●		B3	7_16
6120	6020				●				B2	
6125 R	6R						●		B3	7_16
6125 M	6M						●		B3	7_16
6125	6025				●				B2	
6125 D	6D				●				B2	
6130	6030				●				B2	62-64
6130 D	6D				●				B2	
6130 R	6R						●		B4	16
6130 M	6M						●		B4	
6140 R	6R						●		B4	16
6140 M	6M						●		B4	
6150 R	6R						●		B4	16
6150 M	6M						●		B4	
6170 R	6R						●		B4	16
6170 M	6M						●		B4	
6175 R	6R						●		B4	16
6190 R	6R						●		B4	16
6190 M	6M						●		B4	
6195 R	6R						●		B4	16
6200	6000				●				B2	11_62
6205	6005				●				B2	11_16
6210	6010				●				B2	11_62
6210 M	6M						●		B4	

MODELO DE TRACTOR	serie	MODELO DE PALA							serie 300	OBS.
		te7	te8	te9	te10	te20	te30	te40		
6210 R	6R							●	B4	16
6215	6015				●				B2	16
6215 R	6R							●	B4	16
6220	6020				●				B2	62
6225	6025				●				B2	
6230	6030				●				B2	62-64
6300	6000				●				B2	11_62
6310	6010				●				B2	11_62
6320	6020				●				B2	62
6325	6025				●				B2	
6330	6030				●				B2	62-64
6400	6000				●				B2	11_62
6403 DT	6000				●				B1	
6410	6010				●				B2	11
6420	6020				●				B2	62
6425	6025				●				B2	
6430	6030				●				B2	62-64
6506	6000						●		B3	62
6510	6010						●		B3	62
6515 PREMIUM	6015						●		B4	62
6520 PREMIUM	6020						●		B4	62
6525	6025						●		B4	
6530 PREMIUM	6030						●		B4	62-64
6534 PREMIUM	6030						●		B4	62-64
6600	6000						●		B3	62
6603	6000					●			B2	
6605	6005						●		B3	62
6610	6010						●		B3	62
6620 PREMIUM	6020						●		B4	62
6630 PREMIUM	6030						●		B4	62-64
6800	6000						●		B3	62
6810	6010						●		B3	62
6820 PREMIUM	6020						●		B4	62
6830 PREMIUM	6030						●		B4	62-64
6900	6000						●		B3	62
6910	6010						●		B3	62
6920 PREMIUM	6020						●		B4	62
6930 PREMIUM	6030						●		B4	62-64
7430	7030							●	B4	
7530	7030							●	B4	
7600	7000							●	B4	62
7610	7010							●	B4	62
7700	7000							●	B4	
7710	7010							●	B4	62
7800	7000							●	B4	62
7810	7010							●	B4	62

OBSERVATIONS

- 4 - Specify wheel measures.
- 7 - With original three-point, fit an upper arm.
- 10 - Specify if the tractor has a cab or anti-dump chassis.
- 11 - With front suspension, fit an upper arm.
- 16 - Specify if the tractor has a front hitch of origin.

- 21 - Front fenders fixed or movable.
- 31 - Supplement supply for exhaust pipe modification.
- 62 - Pressure cover with an extra charge of 130 €.
- 64 - Specify if the tractor is Premium series.



EXPORT AMERICA / ASIA / OCEANIA

Contact: Sergio Alonso
Tels: +34 983 33 80 99
Fax: +34 983 37 71 60
Movil: +34 690 13 30 10
e-mail: salonso@tenias.com

EXPORT EUROPE / RUSSIA

Contact: Victor Dominguez
Tels: +34 954 51 15 44 / +34 954 51 16 45
Fax: +34 954 99 90 88
Movil: +34 670 63 92 59
e-mail: vdominguez@tenias.com

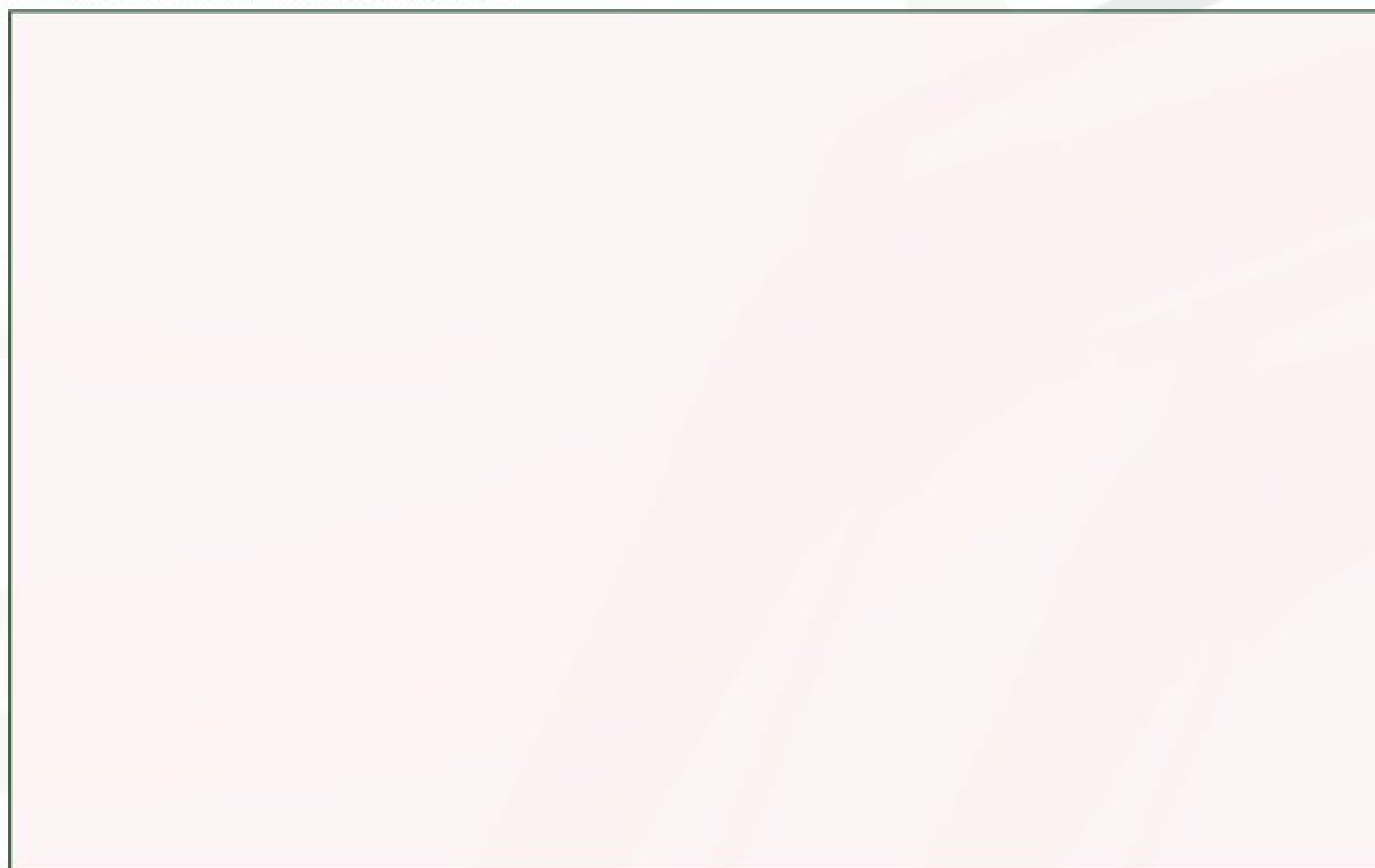
EXPORT AFRICA / ORIENTE MEDIO

Contact: Fernando Burgos
Tel. +34 983 33 80 99
Fax: +34 983 37 71 60
Movil: +34 636 97 57 65
e-mail: fburgos@tenias.com

HEAD OFFICE AND FACTORY

Pol. Ind. Valdeferrín, c/3 - Pcla. 91
50600 EJEA DE LOS CABALLEROS (Zaragoza-España)
Tel. +34 976 67 71 50
Fax +34 976 66 12 15
e-mail: tenias@tenias.com - www.tenias.com

Authorized dealer



tenías

FÁBRICA Y OFICINAS CENTRALES

Pol. Ind. Valdeferrín, c/3 - Pcla. 91
50600 EJEA DE LOS CABALLEROS (Zaragoza-España)
Tel. +34 976 67 71 50
Fax +34 976 66 12 15
e-mail: tenias@tenias.com - www.tenias.com