



tenías

Brochure

*of front loader and implements
for models*



**CLAAS
RENAULT**

**DRP System ®
AUTOMATIC LOADER HITCH**



It allows secure and simple loader coupling and uncoupling.

SAFETY VALVES

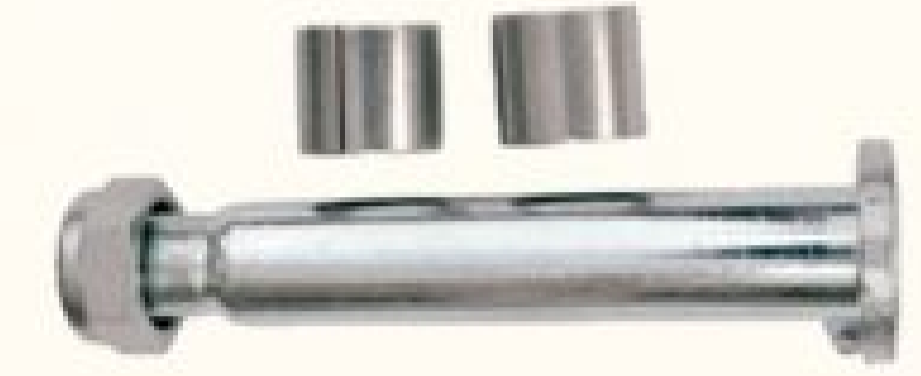


It regulates the pressure of hydraulics cylinders avoiding over pressures and unexpected breakages.

DETAIL INSIDE ARM



**AUTO LUBRICANT BUSHINGS
IN EACH JOINT**



Bushings in each joint, with greasers in the most problematic areas, ensure the sustainability of the whole.

**DRC System ®
AUTOMATIC HITCH FOR IMPLEMENTS**



Only few seconds are needed to hitch or unhitch implements

DR2B System ® / DR4B System ®



Fast hydraulic plugging with flat tips allowing more cleanliness and plugging with residual pressure.



OPTIONS

**AH System ®
SHOCK ABSORBER**



A good confort is obtained for the user as well as protection for all components during transport.

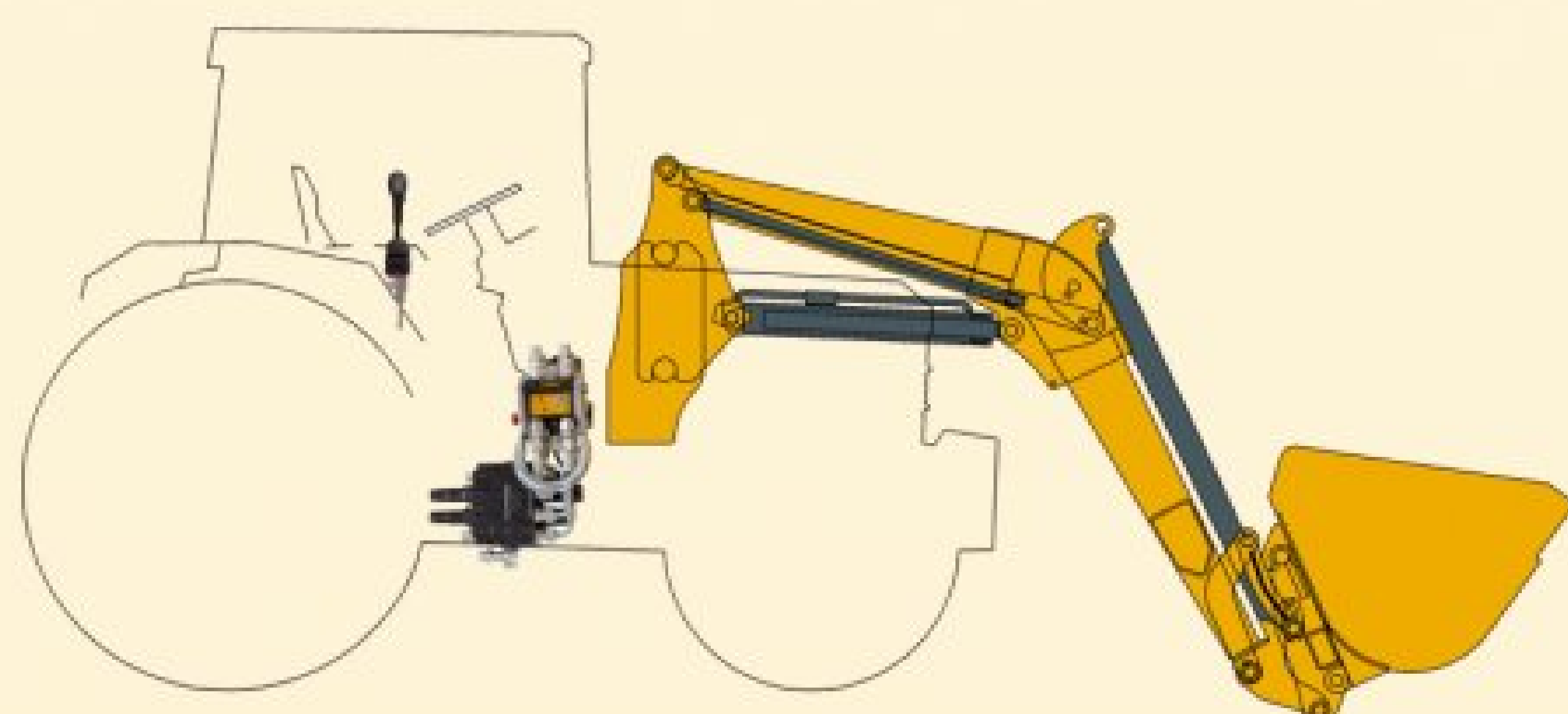


**SERVICE LINE FOR HYDRAULIC
IMPLEMENTS**

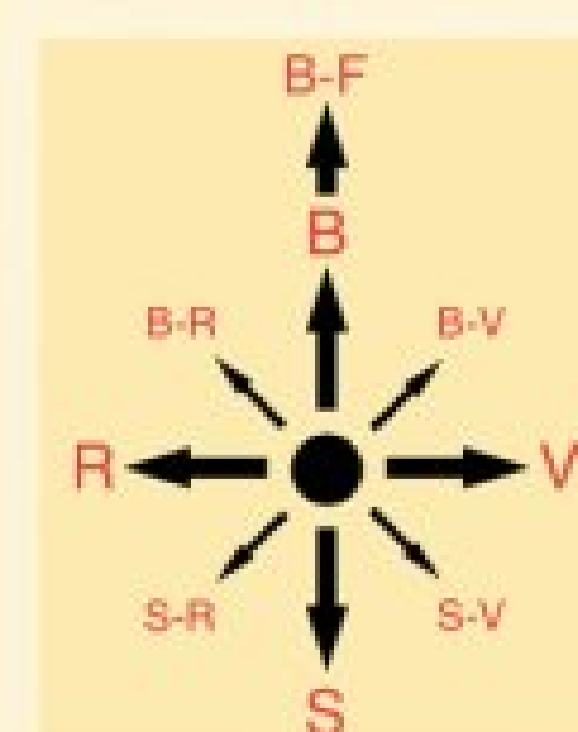


**MS System ®
JOYSTICK**

Operating plan for joystick



Operated from a joystick that allows two moves simultaneously.



**PAINT FINISH IN
DIFFERENT COLORS**



serie evolution



SUBFRAME DESIGNED FOR EACH TRACTOR MODEL

It's the loader main part and the basis of its proper functioning. It consists of a set of different pieces distributed from the front of the tractor to its back axle, obtaining an uniform repartition of the efforts.

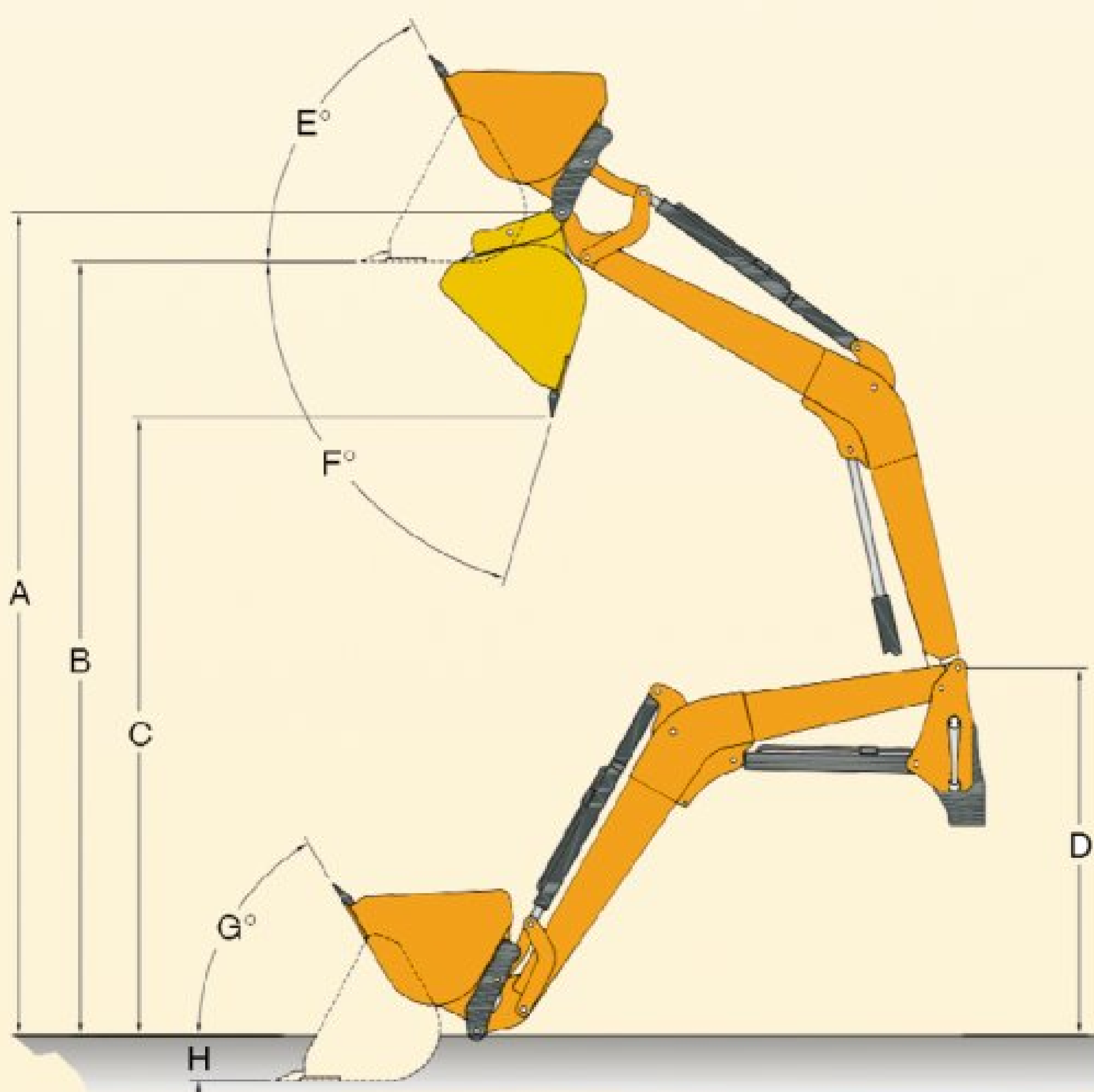
model	te7	te8	te9	te10	te20	te30	te40
-------	-----	-----	-----	------	------	------	------

CONTAIN

- Adaptation
- Arms
- Hydraulic installation (Electrovalve, Distributor or tractor remote control)
- All elements for work (Cylinders, Hoses, Connections, .. etc.)
- DRB standard.

DON'T CONTAIN

- Buckets
- Forks



NOTE: Mesures given can vary according to the tractor model.

Measurements were taken at 190 bar and with a weight placed on pallet fork.

I Start-up power
J Payload at 2,00 mts.
K At max. height

MOD. PALA	A	B	C	D	E	F	G	H	I	J	K
te6	-	-	-	-	-	-	-	-	914 Kgs	-	400 Kgs
te7	2540	2410	1832	1300	55°	78°	49°	149	1024 Kgs	-	724 Kgs
te8	2846	2690	2000	1420	64°	72°	54°	134	1960 Kgs	-	1250 Kgs
te9	3142	2909	2295	1469	64°	75°	57°	211	2044 Kgs	-	1362 Kgs
te10	3720	3484	2887	1706	64°	74°	57°	214	2728 Kgs	2068 Kgs	1628 Kgs
te20	4051	3815	3197	1792	64°	75°	59°	214	2160 Kgs	1824 Kgs	1530 Kgs
te30	4301	4065	3447	1970	62°	74°	57°	214	2858 Kgs	2133 Kgs	1755 Kgs
te40	4564	4327	3708	2140	62°	74°	57°	214	3177 Kgs	2550 Kgs	2215 Kgs

SILAGE SHEARS



WIDTH (mts)	TEETH	GRIP OPENING (mm)	WEIGHT (Kgs)
1,50	13	805	480
1,75	15	805	528

STONE BUCKET



WIDTH (mts)	CAPACITY (liters)	CAPACITY (liters)	WEIGHT
1,75	618	772	284
2,00	707	883	331

MANURE FORK



WIDTH (mts)	TEETH	TINE LENGTH (mm)	WEIGHT (Kgs)
1,50	8	850	163
1,75	9	850	189
2,00	11	850	210
2,20	11	850	258

SUGAR BEET BUCKET



WIDTH (mts)	CAPACITY (liters)	CAPACITY (liters)	WEIGHT
2,00	813	1016	251
2,40	988	1235	326

LOG GRIP



WIDTH (mm)	GRIP OPENING (mm)	CYLINDER INSIDE DIAMETER (mm)	WEIGHT (mm)
1170	930	80	276

HYDRAULIC MANURE FORK



WIDTH (mts)	TEETH	GRIP OPENING (mm)	WEIGHT (Kgs)
1,50	8	1265	297
1,75	9	1265	330
2,00	11	1265	360
2,20	11	1265	410

BUCKET 4 IN 1



WIDTH (mts)	CAPACITY (liters)	CAPACITY (liters)	WEIGHT
1,75	468	585	383
2,00	535	668	438

SILAGE BUCKET "TIBURON"



WIDTH (mts)	CAPACITY (liters)	CAPACITY (liters)	WEIGHT
2,00	1113	1391	520
2,20	1228	1535	542
2,40	1343	1678	570

ROUND BALES FORK



WIDTH (mm)	WIDTH TEETH (mm)	TEETH	WEIGHT (Kgs)
1172	800	2	101

SUGAR CANE GRIP



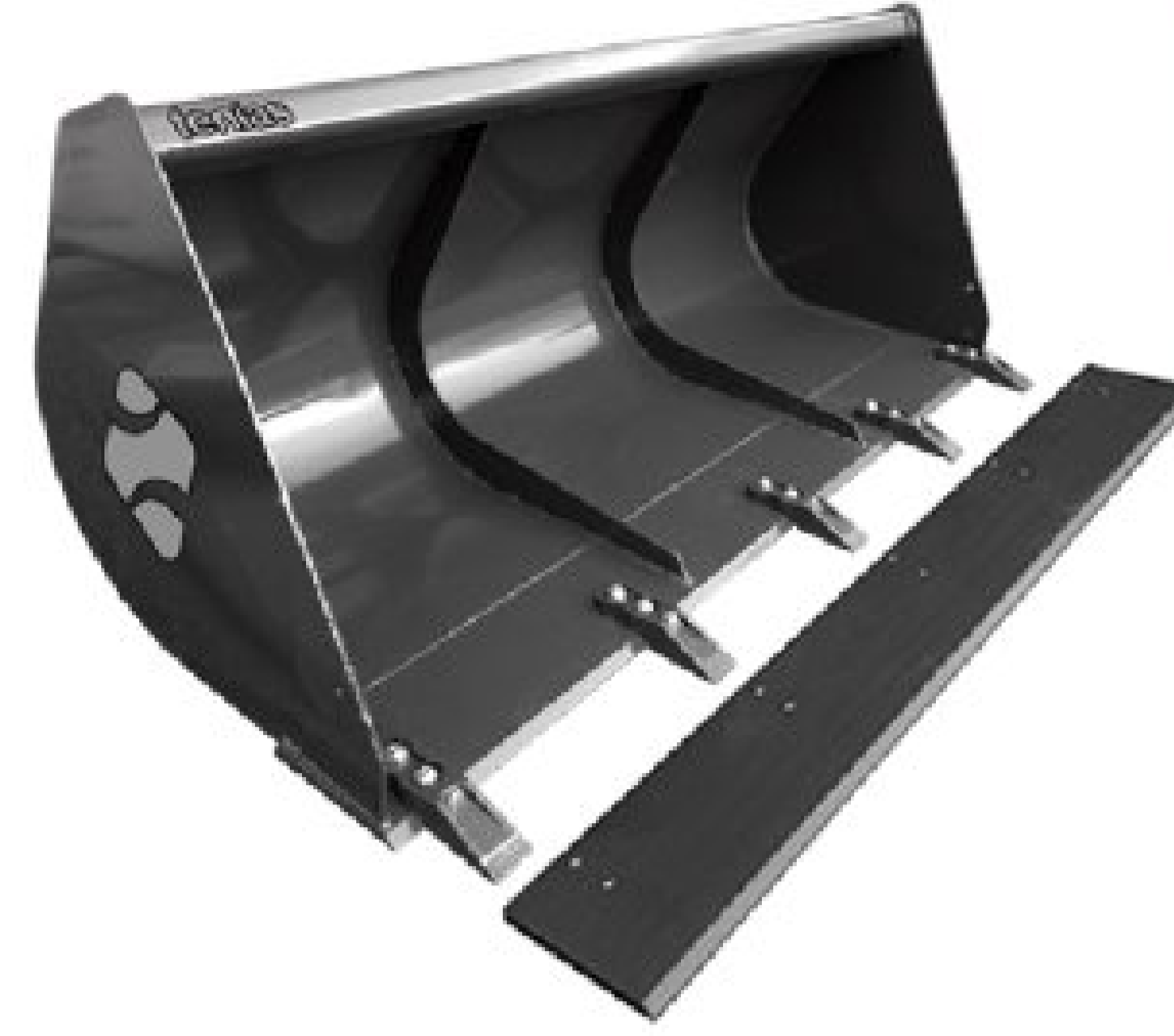
WIDTH (mm)	OUVERTURE PINCE (mm)	GRIP OPENING (mm)	WEIGHT (Kgs)
1195	970	1265	286

POTATO BUCKET



WIDTH (mts)	CAPACITY (liters)	CAPACITY (liters)	WEIGHT
2,20	1103	1378	363
2,40	1217	1521	396

STANDARD BUCKET



WIDTH (mts)	CAPACITY (liters)	CAPACITY (liters)	WEIGHT
1,25	353	441	169
1,50	423	528	199
1,75	494	617	218
2,00	564	705	260
2,20	621	776	269
2,40	677	846	295

PELICAN BUCKET



WIDTH (mts)	TEETH	GRIP OPENING (mm)	WEIGHT (Kgs)
1,50	8	1165	298
1,75	9	1165	320
2,00	11	1165	374
2,20	11	1165	445

GRAIN BUCKET



WIDTH (mts)	CAPACITY (litros)	CAPACITY (litros)	WEIGHT (Kgs)
1,80	812	1015	277
2,00	903	1128	298
2,20	993	1241	319
2,40	1083	1353	340

High-tip option

SILAGE BUCKET



WIDTH (mts)	CAPACITY (liters)	CAPACITY (liters)	WEIGHT
2,00	903	1128	484
2,40	1083	1353	566

SQUARE BALES FORK



WIDTH (mm)	HEIGHT (mm)	TEETH	WEIGHT (Kgs)
1775	1350	5	224

SLIDING SQUARE BALES FORK



WIDTH (mm)	HEIGHT (mm)	TEETH	WEIGHT (Kgs)
1775	1350	5	327

SIDE-SHIFT PALET FORK



ALLOWED WEIGHT (Kgs)	TINE LENGTH (mm)	MAX. TINE WIDTH DENT (mm)	WEIGHT (Kgs)
1500	1225	1060	290

Side Dump option

WRAPPED ROUND BALES GRIP (economic)



WIDTH (mts)	TEETH OPEN (mm)	TEETH CLOSED (mm)	WEIGHT (Kgs)
1,16	2080	70	150

STANDARD PALET FORK



ALLOWED WEIGHT (Kgs)	TINE LENGTH (mm)	MAX. TINE WIDTH DENT (mm)	WEIGHT (Kgs)
1500	1240	1065	173

WRAPPED ROUND BALES GRIP



WIDTH (mm)	TEETH OPEN (mm)	TEETH CLOSED (mm)	WEIGHT (Kgs)
1312	1305	2640	282

MODELO DE TRACTOR	serie	MODELO DE PALA						serie 300	OBS.
		te7	te8	te9	te10	te20	te30		
55.14 LB	50			●				B0	
55.14 V	50			●				B0	
70.12 F y V	70			●				B0	9
70.14 F y V	70			●				B0	9
70.14 F Export S/CAB	70			●				B0	
70.14 LB	70			●				B1	
70.32	70				●			B1	
70.34	70					●		B2	
75.14	70					●		B2	
75.14 LS	70					●		B2	
75.32	70					●		B2	
75.34	70					●		B2	
80.14 F Export	80			●				B0	9
80.14 LB	80				●			B1	
80.14 TX	80					●		B2	
80.34	80					●		B2	
85 X	CERES					●		B2	
85.14	80					●		B2	
85.32	80					●		B2	
85.34	80					●		B2	
90.32	90					●		B2	
90.34	90					●		B2	
90.34 CAB. TX	90					●		B2	
90.34 MX	90					●		B2	
90.34 TRACFOR	90					●		B2	
95	ERGOS					●		B2	
95	ERGOS ST					●		*	
95 X	CERES					●		B2	
95.14 TX	90					●		B2	
100	ERGOS ST					●			
103.14 TX 16	100					●		B2	
103.54 TL EXPORT	100						●	B3	
103.54 Export TS	100							B4	
103.54 Export TA	100							B4	
103.54 TRACTONIC	100						●	B3	
103.54 TS Turbo	100						●	B3	
103.54 TX	100						●	B3	
106.14 TX	100						●	B3	
106.54 TL EXPORT	100						●	B3	
110.14 TX	100							B4	
120	DIONIS	●						B00	
120 S/CAB	FRUCTUS	●						B00	
120.14 TX	100							B4	
120.54 TX	100							B4	
130	FRUCTUS		●					B0	
130	DIONIS		●					B0	
133.14 TX	100							B4	
140	DIONIS		●					B0	
140	FRUCTUS		●					B0	
140 DTS	FRUCTUS		●					B0	
145.54 TX	100							B4	
155.54	100							B4	
210	PALES		●					B0	1-31
220	PALES		●					B0	1-31
230 C/CAB y Escape Arriba	PALES		●					B0	1-9
230	PALES			●				B1	1-9
240 C/CAB y Escape Arriba	PALES		●					B0	1-9
240	PALES			●				B1	1-9
330	CERES				●			B2	
335	CERES				●			B2	

MODELO DE TRACTOR	serie	MODELO DE PALA						serie 300	OBS.
		te7	te8	te9	te10	te20	te30		
340 (Motor J. Deere)	CERGOS					●		B2	
340	CERES					●		B2	
345	CERES					●		B2	
350	CERGOS					●		B2	
355	CERGOS					●		B2	
355	CERES					●		B2	
355 X	CERES					●		B2	
410	ARION						●	B3	16
420	ARION						●	B3	16
426	CELTIS				●			B1	16
426 RA / RC / RX	CELTIS				●			B1	16
430	ARION						●	B3	16
446	CELTIS				●			B1	16
446 RA / RC / RX	CELTIS				●			B1	16
456	CELTIS				●			B1	16
456 RA / RC / RX	CELTIS				●			B1	16
540 RX	ARES					●		B2	
547 ATX y ATZ	ARES						●	B3	
550 X	TEMIS						●	B2	
550 RX	ARES				●			B1 - B2 - B3	
551.4 S	500			●				B0	
556 X y Z	ARES						●	B3	16
557 ATX y ATZ	ARES						●	B3	16
567 ATX y ATZ	ARES						●	B3	16
577 ATX y ATZ	ARES						●	B3	16
610 RX y RZ	ARES						●	B3	16
610 X	TEMIS						●	B3	16
616 RC y RZ	ARES						●	B3	16
617 ATX y ATZ	ARES						●	B3	16
620 RZ	ARES						●	B3	16
626 RZ	ARES						●	B3	16
630 RZ	ARES							B4	
630 Z	TEMIS						●	B3	
640 RZ	ARES						●	B4	16
650 Z	TEMIS								
651.4	600					●		B2	
652	600					●		B2	
652.4	600					●		B2	
656 RC y RZ	ARES						●	B3	16
657 ATX y ATZ	ARES						●	B3	16
681.4 S	600					●		B2	
696 RZ	ARES							B4	16
697 ATX y ATZ	ARES							B4	16
710 RZ	ARES							B4	
720 RZ	ARES							B4	
751.2	700					●		B2	
751.4	700					●		B2	
751.4 GP	700					●		B2	
751.4 S	700					●		B2	
781.4	700					●		B2	
815 RZ	ARES							B4	
816 RZ	ARES							B4	
826	ARES							B4	
836	ARES							B4	
851.4 E	800					●		B2	
851.4 S	800					●		B2	
981	900						●	B3	
981.4	900						●	B3	
1181.4	1000						●	B3	
1181.4 E	1000						●	B3	

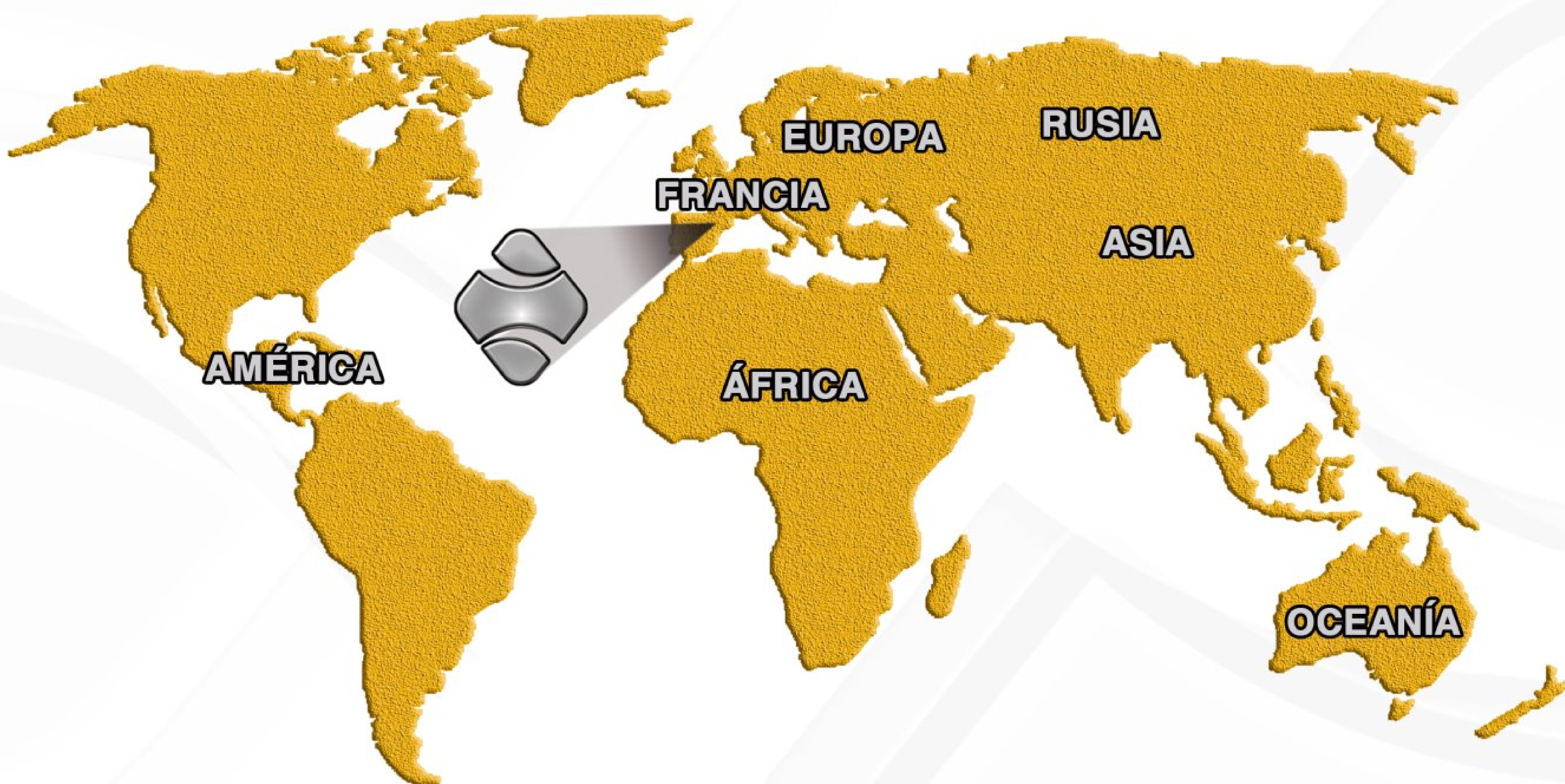
MODELO DE TRACTOR	serie	MODELO DE PALA							serie 300	OBS.
		te7	te8	te9	te10	te20	te30	te40		
210	ELIOS T4				●				B1	
210	ELIOS TIII				●				B1	
210 F	NEXOS			●					B0	
220	ELIOS T4				●				B1	
220	ELIOS TIII				●				B1	
220	TALOS				●				B1	
220 F	NEXOS			●					B0	
227 F ST	NECTIS			●					B0	10
227 VL DT	NECTIS			●					B0	4-10-42
230	ELIOS T4				●				B1	
230	ELIOS TIII				●				B1	
230	TALOS				●				B1	
230 FB	NEXOS			●					B0	
230 VL	NEXOS			●					B0	10
237 VL DT	NECTIS			●					B0	10
240	ELIOS T4				●				B1	
240	TALOS				●				B1	
240 F	NEXOS			●					B0	
247 F DT	NECTIS			●					B0	4-10-42
247 VL DT	NECTIS			●					B0	4-10-42
257 F DT	NECTIS			●					B0	4-10-42
257 VL DT	NECTIS			●					B0	4-10-42
267 F DT	NECTIS			●					B0	4-10-42
267 VL DT	NECTIS			●					B0	4-10-42
277 F DT	NECTIS			●					B0	4-10-42
277 VL DT	NECTIS			●					B0	4-10-42
310	AXOS				●				B1	
320	AXOS				●				B1	
330	AXOS				●				B1	
330	ATOS					●			B2	
340	AXOS				●				B1	
340	ATOS					●			B2	
350	ATOS					●			B2	
410	ARION						●		B3	16-23-81
410 (160 mm + BAJO)	ARION				●				B2	
410 T4	ARION				●				B2	7
420	ARION						●		B3	16-23-81
420 (160 mm + BAJO)	ARION				●				B2	
420 T4	ARION				●				B2	7
430	ARION						●		B3	16-23-81
430 (160 mm + BAJO)	ARION				●				B2	
430 T4	ARION				●				B2	7
440 T4	ARION				●				B2	7
450 T4	ARION				●				B2	7

MODELO DE TRACTOR	serie	MODELO DE PALA							serie 300	OBS.
		te7	te8	te9	te10	te20	te30	te40		
460 T4	ARION					●			B2	7
510	ARION						●		B3	61
520	ARION						●		B3	61
530	ARION						●		B3	61
530 T4 Stage IIIb	ARION						●		B3	
540	ARION						●		B3	61
540 T4 Stage IIIb	ARION						●		B3	
546 RX y RZ	ARES						●		B3	
547 ATX y ATZ	ARES						●		B3	16
556 RX y RZ	ARES						●		B3	
557 ATX y ATZ	ARES						●		B3	16
566 RX y RZ	ARES						●		B3	
567 ATX y ATZ	ARES						●		B3	
577 ATX y ATZ	ARES						●		B3	
610 C y M	ARION							●	B4	
616 RC	ARES							●	B3	
616 RX y RZ	ARES							●	B3	
617 ATX y ATZ	ARES							●	B3	
620 C y M	ARION							●	B4	
620 STAGE III B	ARION							●	B4	
620 STAGE III B CONCEPT	ARION							●	B4	
630 C y M	ARION							●	B4	
630 STAGE III B	ARION							●	B4	
630 STAGE III B CONCEPT	ARION							●	B4	
640 C y M	ARION							●	B4	
640 STAGE III B	ARION							●	B4	
640 STAGE III B CONCEPT	ARION							●	B4	
650 STAGE III B	ARION							●	B4	
650 STAGE III B CONCEPT	ARION							●	B4	
656 RX y RZ	ARES							●	B3	
657 ATX y ATZ	ARES							●	B3	
696 RX y RZ	ARES							●	B3	
697 ATX y ATZ	ARES							●	B3	
810	AXION							●	B4	
816	ARES							●	B4	
816 RZ	ARES							●	B4	
820	AXION							●	B4	
826	ARES							●	B4	
826 RZ	ARES							●	B4	
830	AXION							●	B4	
836	ARES							●	B4	
836 RZ	ARES							●	B4	
840	AXION							●	B4	
850	AXION							●	B4	

OBSERVATIONS

- 1 - Specify exhaust pipe type (from bottom up, from top to bottom, side).
- 4 - Specify wheel measures.
- 7 - With original three-point, fit an upper arm.
- 9 - Specify if the tractor has a cab of origin.
- 10 - Specify if the tractor has a cab or anti-dump chassis.
- 16 - Specify if the tractor has a front hitch of origin.

- 23 - The specified loader model can be adapted without counterweights.
- 31 - Supplement supply for exhaust pipe modification.
- 42 - Specify front wheels inside width.
- 61 - Specify if the tractor has Open circuit or Closed circuit.
- 81 - State whether it has a mud-guard.



EXPORT AMERICA / ASIA / OCEANIA

Contact: Sergio Alonso
Tels: +34 983 33 80 99
Fax: +34 983 37 71 60
Movil: +34 690 13 30 10
e-mail: salonso@tenias.com

EXPORT EUROPE / RUSSIA

Contact: Victor Dominguez
Tels: +34 954 51 15 44 / +34 954 51 16 45
Fax: +34 954 99 90 88
Movil: +34 670 63 92 59
e-mail: vdominguez@tenias.com

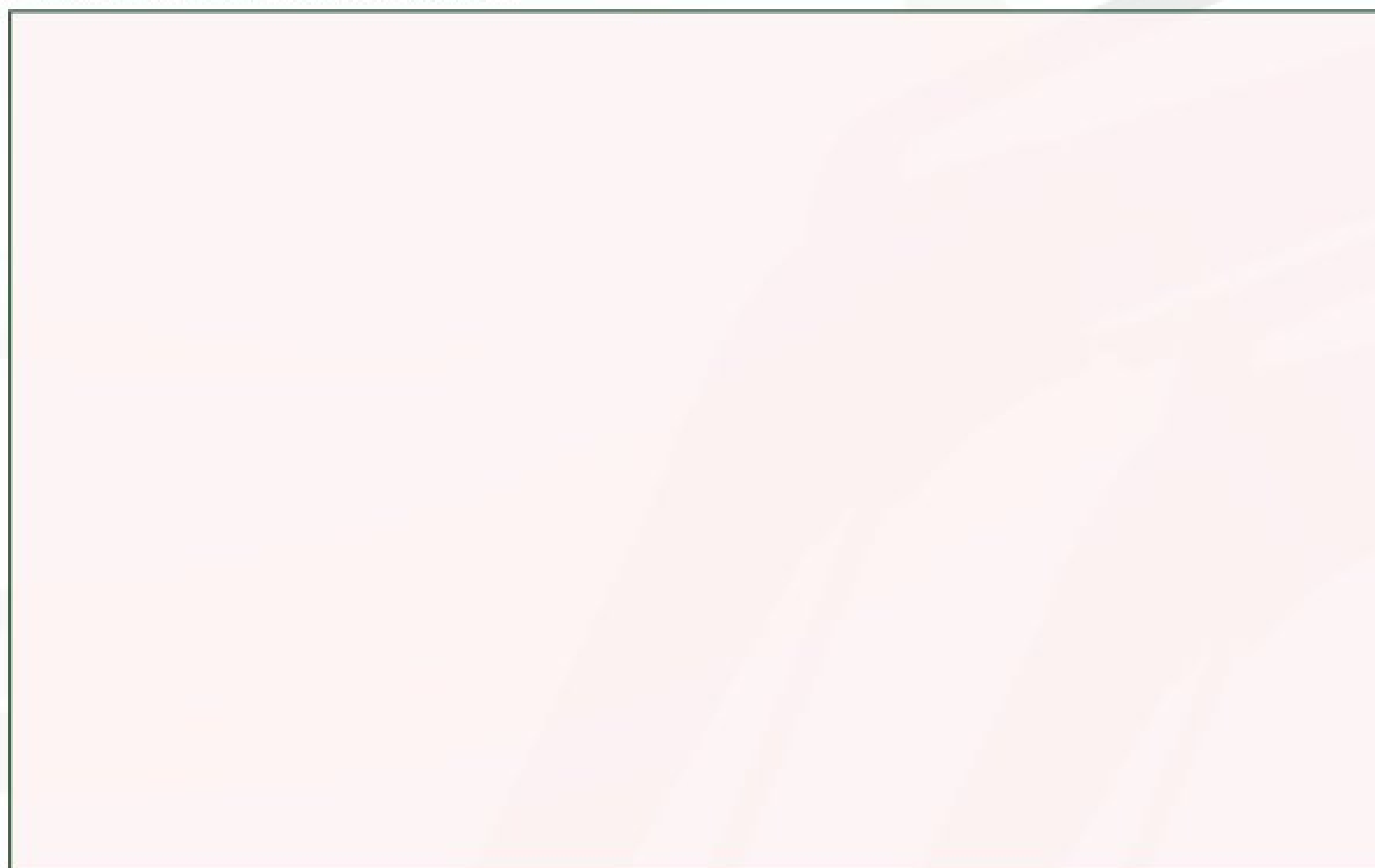
EXPORT AFRICA / ORIENTE MEDIO

Contact: Fernando Burgos
Tel. +34 983 33 80 99
Fax: +34 983 37 71 60
Movil: +34 636 97 57 65
e-mail: fburgos@tenias.com

HEAD OFFICE AND FACTORY

Pol. Ind. Valdeferrín, c/3 - Pcla. 91
50600 EJEA DE LOS CABALLEROS (Zaragoza-España)
Tel. +34 976 67 71 50
Fax +34 976 66 12 15
e-mail: tenias@tenias.com - www.tenias.com

Authorized dealer



tenías

FÁBRICA Y OFICINAS CENTRALES

Pol. Ind. Valdeferrín, c/3 - Pcla. 91
50600 EJEA DE LOS CABALLEROS (Zaragoza-España)
Tel. +34 976 67 71 50
Fax +34 976 66 12 15
e-mail: tenias@tenias.com - www.tenias.com